

2304 2008 Rosser Avenue, Burnaby

\$949,000



Welcome home to SOLO DISTRICT, located in the heart of Brentwood Park! Built by Appia/Bosa, this bright 2 Bed, 2 Full Bath, NE corner suite hovers from the 23rd floor, feat:

BREATH TAKING VIEWS of the NORTH SHORE MOUNTAINS & MT BAKER, geothermal heating/cooling, Bosch/Blomberg/Fisher & Paykel s/s appliances, modern Italian cabinetry, gas range, engineered wood floors, quartz countertops/backsplash, private balcony, 1 parking, & 1 locker. Additions include living room wall unit, elegant lighting, & blackout blinds. Special limited time bonus available to owner residents: transit reimbursement! Amenities include sauna/steam room, gym, party room, & BBQ area w/ dog park. SkyTrain, Whole Foods, plus all levels of shops/restaurants are at your doorstep! Open House Sat Jan 6, 1-3pm

KEY INFORMATION

MLS® R2229823

Residential Attached

Brentwood Park

2 Bedrooms

2 Bathrooms

924 SF

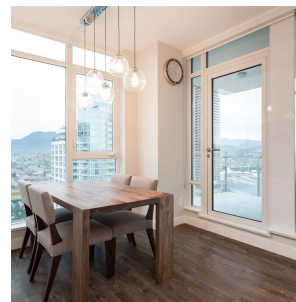
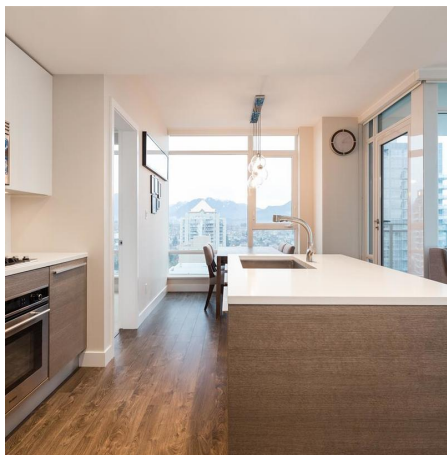
\$410.86 Maintenance Fees

FEATURES

Year Built: 2015

Views: NORTH SHORE MTNS, MT BAKER

Listed By: rennie & associates realty ltd.



Eric Zamora PREC*
778.389.4556
ezamora@rennie.com
rennie.com/ericzamora

rennie