

101 2330 Maple Street, Vancouver

\$599,900



Great building in Kits! Pet Friendly, Rentals Allowed, Underground parking, & Storage unit. Large NW corner unit with wrap around patio, Quiet street, Easy walk to the Beach, 1 block off the walking/bike trail, and only 3 blocks to the newly proposed skytrain extension. Room for a king size bed, and large living room furniture. Bright unit with big windows, patio doors, and many updates. Great for personal use or Investment!

KEY INFORMATION

MLS® R2221803

Residential Attached

Kitsilano

1 Bedroom

1 Bathroom

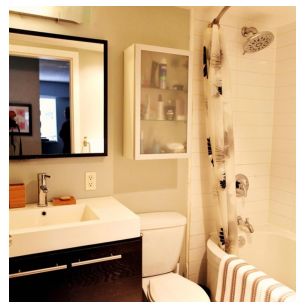
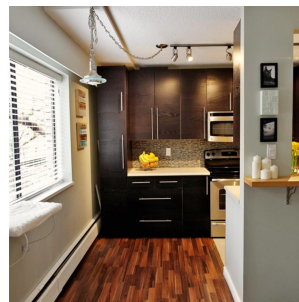
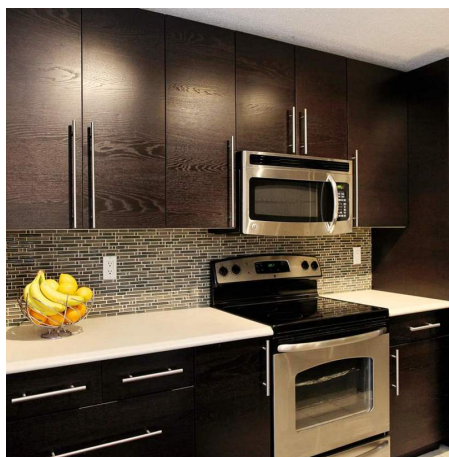
726 SF

\$254.99 Maintenance Fees

FEATURES

Year Built: 1974

Listed By: rennie & associates realty ltd.



Irene De Guzman

604.720.1996

ideguzman@rennie.com

rennie.com/irenedeguzman

rennie