

305 1515 Atlas Lane, Vancouver

\$699,900



Shannon Wall Centre Kerrisdale – Vancouver’s Last Great Family Estate! Located in Vancouver west side prestigious park-like neighbourhood, secluded behind heritage stone walls, mature trees & generous setbacks. Great views of the garden and the Peter Wall Mansion. Be ready to move in this beautiful south facing 1 bdrm + parking + storage unit at Cartier House. This unit offers high end stainless steel appliances European cabinetry and quartz counters. Amenities include fully equipped fitness centre with a luxurious outdoor pool. Just minutes away from great shopping in south Granville & Kerrisdale Village, Private Golf Course, parks, restaurants and excellent school catchments. Open House: 2-4pm Sun Dec 10.

KEY INFORMATION

MLS® R2221937

Residential Attached

South Granville

1 Bedroom

1 Bathroom

528 SF

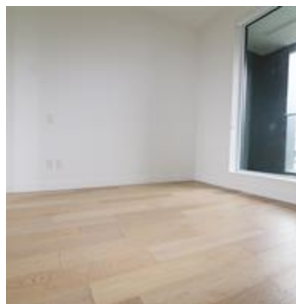
\$275.84 Maintenance Fees

FEATURES

Year Built: 2015

Views: GARDEN, MANSION

Listed By: rennie & associates realty ltd.



Hanson Lu PREC*
604.787.2578
hlu@rennie.com
rennie.com/hansonlu

rennie