

Ph3306 8131 Nunavut Lane, Vancouver

\$1,518,000



PENTHOUSE RESIDENCE at MC2. At the very top of the tower, this southwest corner-facing home commands panoramic views of the city, ocean and mountains beyond. Modern architecture by James KM Cheng + bespoke interiors by Trepp Design. A thoughtful open layout featuring 2 beds, each with an ensuite bath, a spacious office/den, an exclusive kitchen by Armony Cucine, over-height ceilings and a wrap-around terrace enabling individuals to experience the ultimate in indoor/outdoor living. Take advantage of luxurious amenities including 24 hr concierge, fitness & health facilities and common lounging areas. Includes 2 parking, 1 storage locker & 4 bike lockers. Call us to view!

KEY INFORMATION

MLS® R2223331

Residential Attached

Marpole

2 Bedrooms

2 Bathrooms

1,047 SF

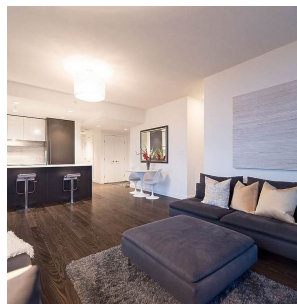
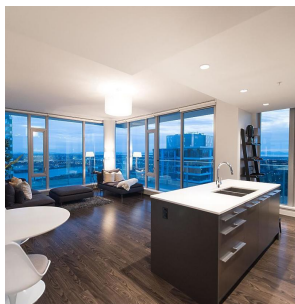
\$459.87 Maintenance Fees

FEATURES

Year Built: 2016

Views: WATER, MOUNT BAKER

Listed By: rennie & associates realty ltd.



Paul Wong PREC*
604.716.0483
pwong@rennie.com
rennie.com/paulwong



Brandon Price PREC*
604.765.9555
bprice@rennie.com
rennie.com/brandanprice



Christop
604.351.0
cboyd@re
rennie.ca

rennie