

# 205 3355 Binning Road, Vancouver

\$1,690,000



Upscale living at Binning Tower in the vibrant community of Wesbrook Village! This exquisite & immaculate 3-bed NE corner home is directly across from the Pacific Spirit Park with close to 350 sf of outdoor space. Enjoy BBQ & views of the park from the 249 sf deck all year round! Floor plan shows 1495 sf; professionally measured by ishot.Enterprises Inc. Best floor plan & beautiful interior finishes; premium quality engineered hardwood flooring throughout; European kitchen with Gaggenau appliances and quartz countertops; 3 ensuite spa bathrooms; side-by-side washer/dryer; custom built-in organizers in closets and flex room. Amenities: fitness room, party room, lounge, library, and resident manager. Bonus: 3 side-by-side parking stalls & storage locker. An absolute pleasure to show.

## KEY INFORMATION

MLS® R2216606

Residential Attached

University

3 Bedrooms

3 Bathrooms

1,464 SF

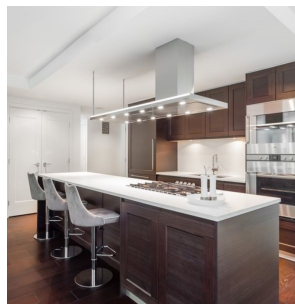
\$642.78 Maintenance Fees

## FEATURES

Year Built: 2016

Views: PAVIFIC SPIRIT PARK

Listed By: rennie & associates realty ltd.



**Mimi Chau** PREC\*  
604.375.6288  
mchau@rennie.com  
rennie.com/mimichau

**rennie**