

# 1602 10777 University Drive, Surrey

\$329,800



AMAZING VIEW! Enjoy unobstructed 180 degree view as far as majestic Mt. Baker in this beautifully designed 1 Bed + den condo in the fast growing Surrey Central. The unit features open concept layout and large windows for plenty of natural light. The layout opens to living and kitchen area with newer laminate, quartz countertops, stainless steel appliances and built in oven. Bedroom features private balcony to enjoy the view. Separate den can be your office or double as extra storage space. Literally across the street from Gateway Station, commuting is easy! Walking distance to Surrey Central shopping, SFU, parks and library, this condo is perfect for first time buyer or investor! Rentals Allowed.

## KEY INFORMATION

MLS® R2218243

Residential Attached

Whalley

1 Bedroom

1 Bathroom

550 SF

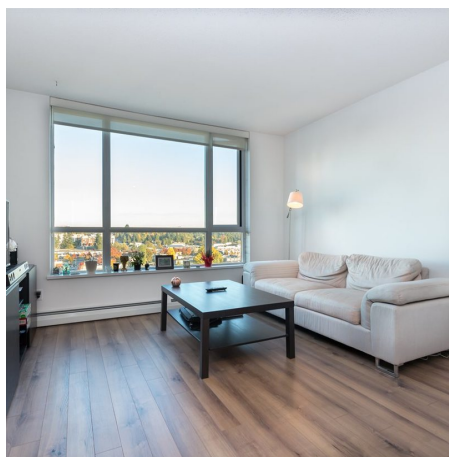
\$269.60 Maintenance Fees

## FEATURES

Year Built: 2010

Views: East, Unobstructed, Mt. Baker

Listed By: rennie & associates realty ltd.



**Art Seroff** PREC\*  
778.223.0033  
aseroff@rennie.com  
rennie.com/artseroff

**rennie**