

34846 Mcmillan Place, Abbotsford

\$689,000



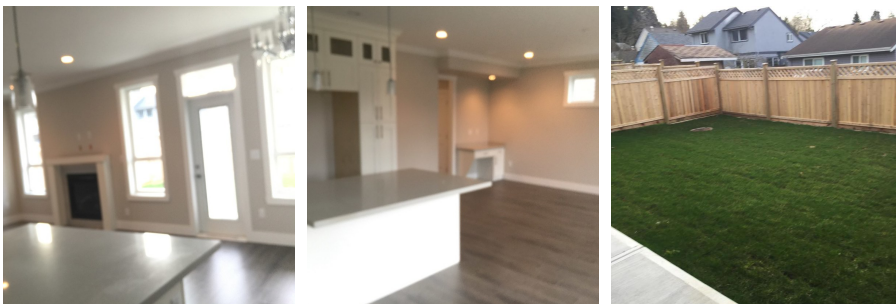
Beautiful Brand new 2 storey home with Home Warranty in New Subdivision in popular Mcmillan Area ! This family friendly neighbourhood is located in East Abby and close to Parks, Recreation, Shopping and Great Schools. Featuring main floor with Great room concept, gourmet kitchen with quartz counter tops , loads of cupboards & covered Patio. 9' Ceiling on both floors. Upstairs Features large master bedroom with walk in closet and 5pc ensuite along with 3 more bdrms. Total 4 Bedrooms. Fenced Backyard. Call today for more information and tour!

KEY INFORMATION

MLS® R2147595
Residential Detached
Abbotsford East
4 Bedrooms
3 Bathrooms
2,076 SF
3,617 SF Lot

FEATURES

Year Built: 2017
Listed By: rennie & associates realty ltd.



Art Seroff PREC*
778.223.0033
aseroff@rennie.com
rennie.com/artseroff

rennie