

1102 2550 Spruce Street, Vancouver

\$1,300,000



WATERVIEW PENTHOUSE with 855sqft of your own PRIVATE rooftop deck in an elegant, 7yr young, boutique, CONCRETE building on a beautiful tree lined street in the Westside of Vancouver. This CORNER home features wall to wall windows and extra height 9 ft ceilings that capture the gorgeous tree lined streets to the south, stunning sunsets to the west and spectacular water views to the north! The layout is superb with 2 bed and office (11x9) which could easily fit a 3rd bed along with a master w/ an ensuite. BONUS TWO Side by Side Parking! Gas Hookup for BBQ! Rentals allowed *min 1 yr lease! EASY TO SHOW IN A MINUTES NOTICE!

KEY INFORMATION

MLS® R2313886

Residential Attached

Fairview

2 Bedrooms

2 Bathrooms

961 SF

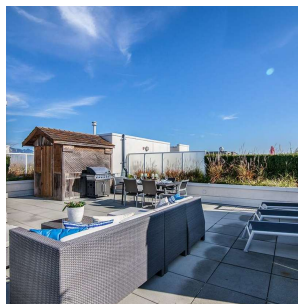
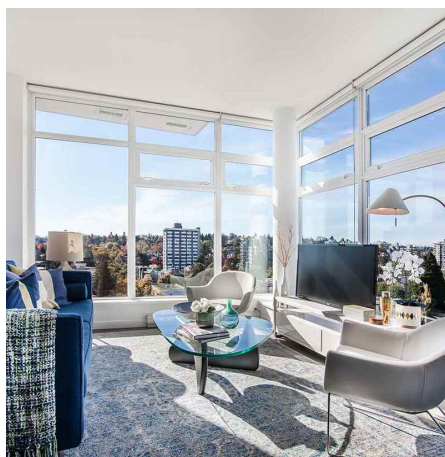
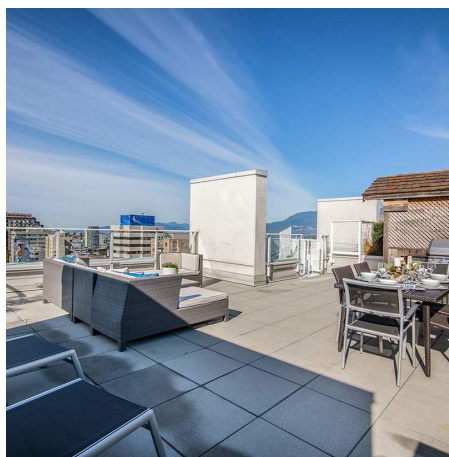
\$489.63 Maintenance Fees

FEATURES

Year Built: 2011

Views: WATER AND MOUNTAINS

Listed By: rennie & associates realty ltd.



Brandon Price PREC*
604.765.9555
bprice@rennie.com
rennie.com/brandanprice

rennie