

307 8451 Westminster Highway, Richmond

\$368,000



Welcome to Arboretum II in the heart of Richmond. This immaculate top floor 1 Bdrm + Flex w/ in-suite laundry! Lots of recent upgrades incl. laminate flooring in the living & bdrm area. Prepare your favourite dishes in the skylit kitch w/ updated Sakura hood fan & Frigidaire fridge. Relax in the spacious bdrm w/walk-through close to ensuite w/updated stone counter & new bathroom fan. Enjoy BBQ's on the covered deck w/room for table & chairs after a dip in the outdoor pool. This well maintained building had recent new tiles, carpets, paint & baseboards done this past year. Located in the heart of Richmond walking distance to Richmond Centre, restaurants, Cook Elementary & much more! 1 Parking inc and RENTALS ALLOWED.

KEY INFORMATION

MLS® R2315500

Residential Attached

Brighthouse

1 Bedroom

1 Bathroom

670 SF

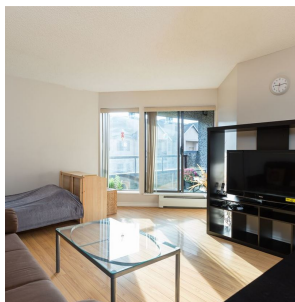
\$328.29 Maintenance Fees

FEATURES

Year Built: 1982

Views: LUSH LANDSCAPING

Listed By: rennie & associates realty ltd.



Danny Chow PREC*
604.765.2469
dchow@rennie.com
rennie.com/dannychow



Salina Kai PREC*
604.773.7013
skai@rennie.com
rennie.com/salinakai

rennie