

312 14980 101a Avenue, Surrey

\$228,000



Cartier Place, located directly across and within walking distance from Guildford Town Centre, new Guildford Recreation Centre. TOP FLOOR UNIT Very large spacious open concept 800 SQFT 1 bedroom with 2 closets - which faces a quiet exposure with trees/green. New paint, crown mouldings throughout, HIGH END NEW SAMSUNG APPLIANCES S/S, gas and hot water included in the maintenance fees. The Kitchen has been beautifully redone and renovated. Incredible opportunity, don't miss it! OPEN HOUSE JUNE 3 & 4, 12:00 - 2:00PM.

KEY INFORMATION

MLS® R2172631

Residential Attached

Guildford

1 Bedroom

1 Bathroom

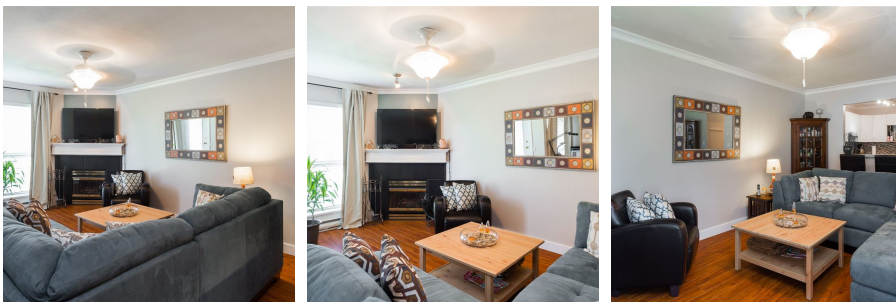
800 SF

\$236.18 Maintenance Fees

FEATURES

Year Built: 1994

Listed By: rennie & associates realty ltd.



Simon Lai PREC*
778.881.3603
slai@rennie.com
rennie.com/simonlai

rennie