

# 259 250 E 6th Avenue, Vancouver

\$580,000



The District, built by award winning developer Amacon, is one of the best concrete constructions in hip & central SOMA. This open concept one bed & den features amazing views of the courtyard, and a generously sized East facing balcony - perfect for sipping a morning coffee. Other features include modern high-end finishes throughout, SS appliance package, & in-suite laundry, a storage locker conveniently located only a few steps down the hall from your front door. Building amenities include an exercise room, party room, & one of the best rooftop decks in the city. One LARGE parking stall incl. Pets & rentals are allowed, making this great for investors & owners alike.

## KEY INFORMATION

MLS® R2173947

Residential Attached

Mount Pleasant

1 Bedroom

1 Bathroom

612 SF

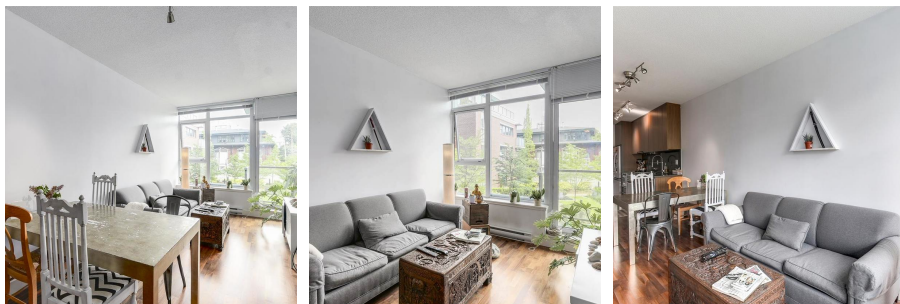
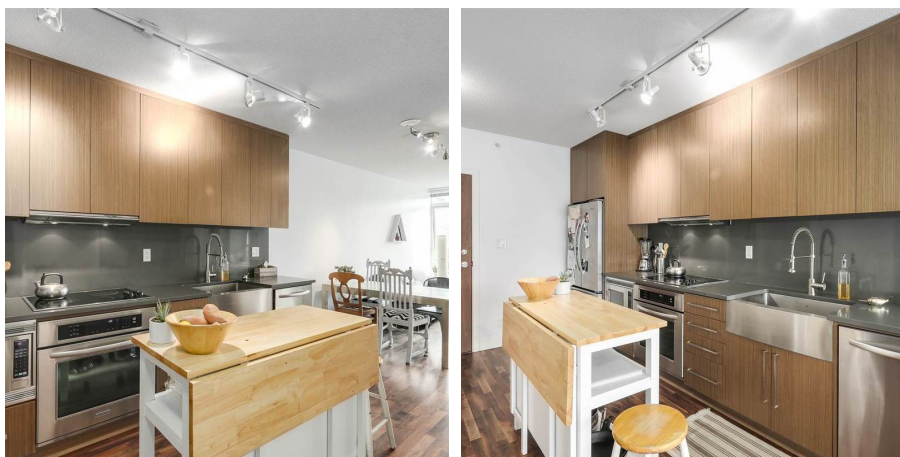
\$289.14 Maintenance Fees

## FEATURES

Year Built: 2012

Views: Onto Courtyard

Listed By: rennie & associates realty ltd.



**Danny Chow** PREC\*  
604.765.2469  
dchow@rennie.com  
rennie.com/dannychow

**rennie**