

209 3178 Dayanee Springs Boulevard, Coquitlam

\$429,900



Situated at the base of Westwood Plateau with close to sky train station mall, community centre, lake, and every urban and natural amenity. These one bedroom homes reflect a modern take on Whistler-inspired architecture with open-plan layouts and latest in contemporary finishes such as granite countertops, warm laminate flooring and sleek stainless steel appliance the largest patio in the complex large enough to entertain a group of friends and family and full year membership to the Timbers Club, a private residents-only clubhouse featuring over 7,500 SqFt of resort-style amenities, call for viewing open house Sunday Jun 25 2-4

KEY INFORMATION

MLS® R2177596

Residential Attached

Westwood Plateau

1 Bedroom

1 Bathroom

614 SF

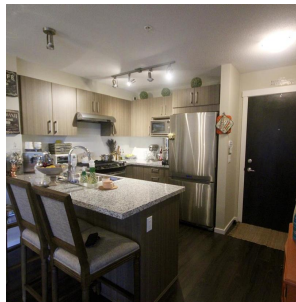
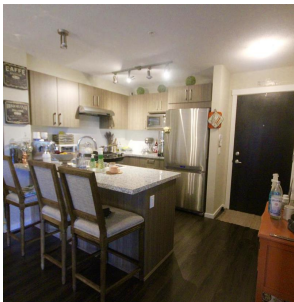
\$191.89 Maintenance Fees

FEATURES

Year Built: 2013

Views: MOUNTAIN

Listed By: rennie & associates realty ltd.



Ryan Wong PREC*
604.551.7966
rwong@rennie.com
rennie.com/ryanwong



Jordan Wong
778.378.6888
jwong@rennie.com
rennie.com/jordanwong

rennie