

# 2010 4815 Eldorado Mews, Vancouver

\$389,900



2300 Kingsway has the distinctive marquee of a signature Wall community. Fall in love with this west facing Jr 1 bed with private balcony with views overlooking mountains and water. Very efficient layout and designer features including gourmet chef's kitchen with granite countertops, GE S/S appliances, fully tiled striking spa-like bathrooms, laminate flooring and much more! Located in the culturally diverse Renfrew-Collingwood neighbourhood includes Norquay Village shopping and choice Vancouver restaurants. 2300 Kingsway Vancouver residences are the perfect locale for accessing the city's best. Includes 1 parking and 1 locker. Excellent value!

## KEY INFORMATION

MLS® R2178451

Residential Attached

Collingwood

1 Bedroom

1 Bathroom

411 SF

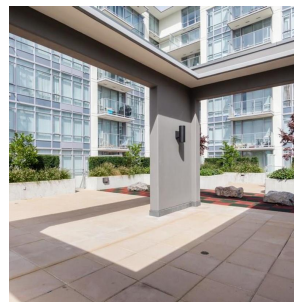
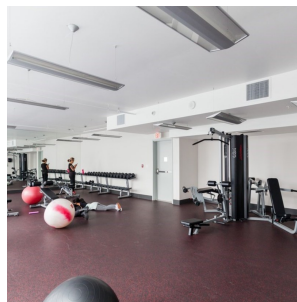
\$180.18 Maintenance Fees

## FEATURES

Year Built: 2013

Views: MOUNTAIN & WATER VIEWS

Listed By: rennie & associates realty ltd.



**Danny Chow** PREC\*  
604.765.2469  
dchow@rennie.com  
rennie.com/dannychow



**Salina Kai** PREC\*  
604.773.7013  
skai@rennie.com  
rennie.com/salinakai

**rennie**