

# 1104 11 E Royal Avenue, New Westminster

\$539,000



Welcome to THE RESIDENCES AT VICTORIA HILL, in New Westminster's most coveted neighbourhood. Features a brilliantly designed floorplan with two large bedrooms and a den + two full bathrooms. Enjoy stainless steel appliances, granite countertops, huge balcony, in-suite storage & a locker, as well as parking. Enjoy dramatic water and mountain views and fantastic amenities including an outdoor pool, hot tub, sauna, and exercise centre. This master planned community offers parks and shops at your doorstep. Take advantage of the close proximity to shopping, transit, and schools.

## KEY INFORMATION

MLS® R2115861

Residential Attached

Fraserview

2 Bedrooms

2 Bathrooms

1,109 SF

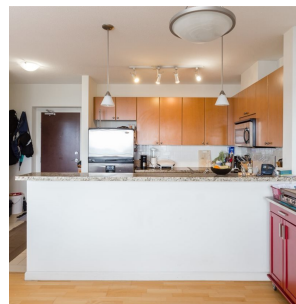
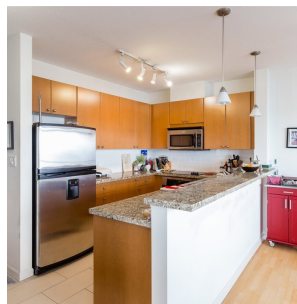
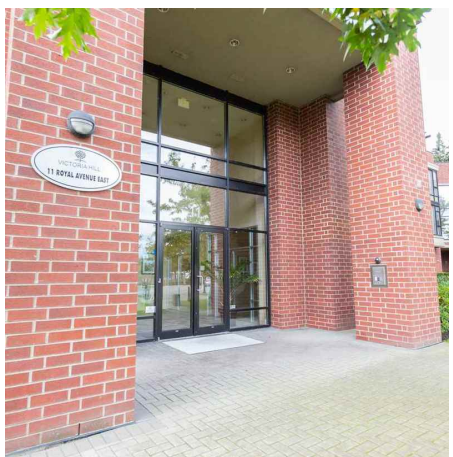
\$390.25 Maintenance Fees

## FEATURES

Year Built: 2007

Views: WATER

Listed By: rennie & associates realty ltd.



**Reggie Tanzola** PREC\*  
778.917.6889  
rtanzola@rennie.com  
rennie.com/reggietanzola

**rennie**