

702 258 Nelson's Crescent, New Westminster

\$529,900



The Columbia, the third of four residential towers is located in the vibrant Brewery district community in historic Sapperton. The 26 storey tower includes 1, 2 & 3 bdrm homes featuring flexible floor plans with 5 full size appliances, incl burner gas stove, undermount sink, quartz counters & recessed lighting. A 10,000 sq ft multi storey amenity center offers a gym, squash court, yoga/dance studio, sauna & steam room. Plus an indoor lounge area with kitchen and outdoor lounge area with bbq & fireplace, perfect for your entertainment needs. Ideal location with shops, cafes & restaurants at your doorstep & the Sapperton Skytrain only 250 meters away. Occupancy June/July 2019. Sales center open daily from 12-5pm.

KEY INFORMATION

MLS® R2120088

Residential Attached

Sapperton

2 Bedrooms

2 Bathrooms

845 SF

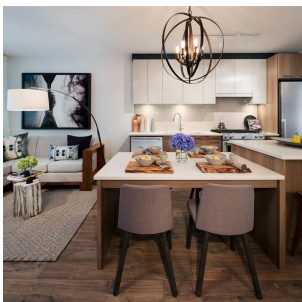
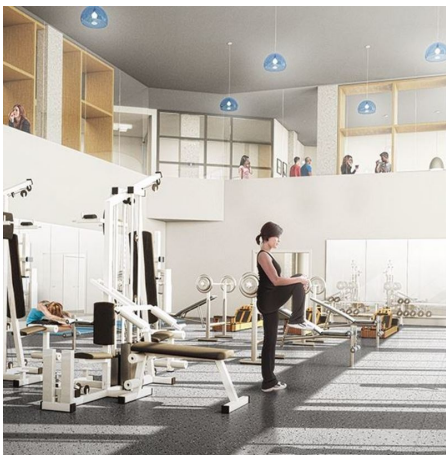
\$323.42 Maintenance Fees

FEATURES

Year Built: 2019

Views: SIDELINE VIEW OF FRASER RIVER

Listed By: rennie & associates realty ltd.



Salina Kai PREC*
604.773.7013
skai@rennie.com
rennie.com/salinakai

rennie