

406 1155 Homer Street, Vancouver

\$699,000



Welcome to CITY CREST. Located at the highly sought-after corner of Homer and Davie in Yaletown! This rarely available, large NE corner 1 bedroom and den, offers an open living space, with a spacious bedroom overlooking the courtyard and garden, which has ample room for your king size bed; french doors leading into the corner office/den overlooking Yaletown Heritage District. Updated bathroom, tiles, laminate flooring, blinds, and brand new stainless steel appliances (not shown in photos). Located across the street from JJ Bean, Choices, Emery Barnes Park and 1 block to the Canada Line - Yaletown Roundhouse Station. OPEN HOUSE: JULY 8 & 9th, 2:00 to 4:00pm

KEY INFORMATION

MLS® R2184520

Residential Attached

Yaletown

1 Bedroom

1 Bathroom

738 SF

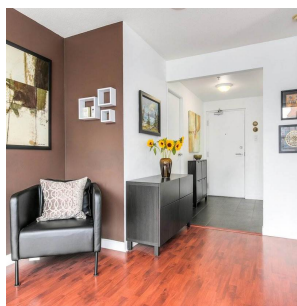
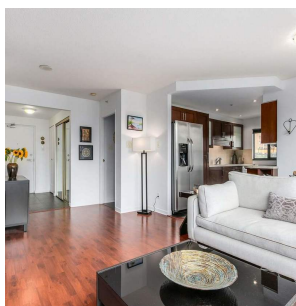
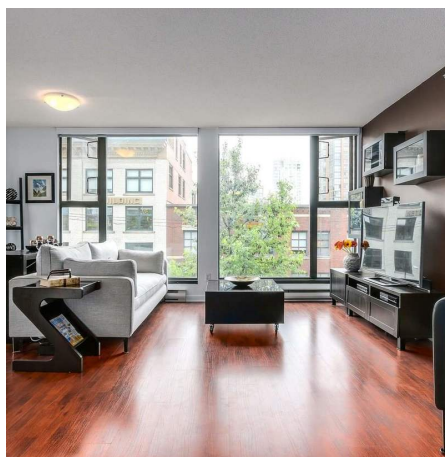
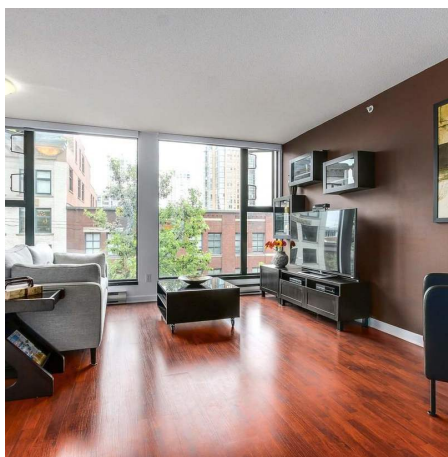
\$338.37 Maintenance Fees

FEATURES

Year Built: 1994

Views: Northeast

Listed By: rennie & associates realty ltd.



Mike Ross
778.987.8874
mross@rennie.com
rennie.com/mikeros

rennie