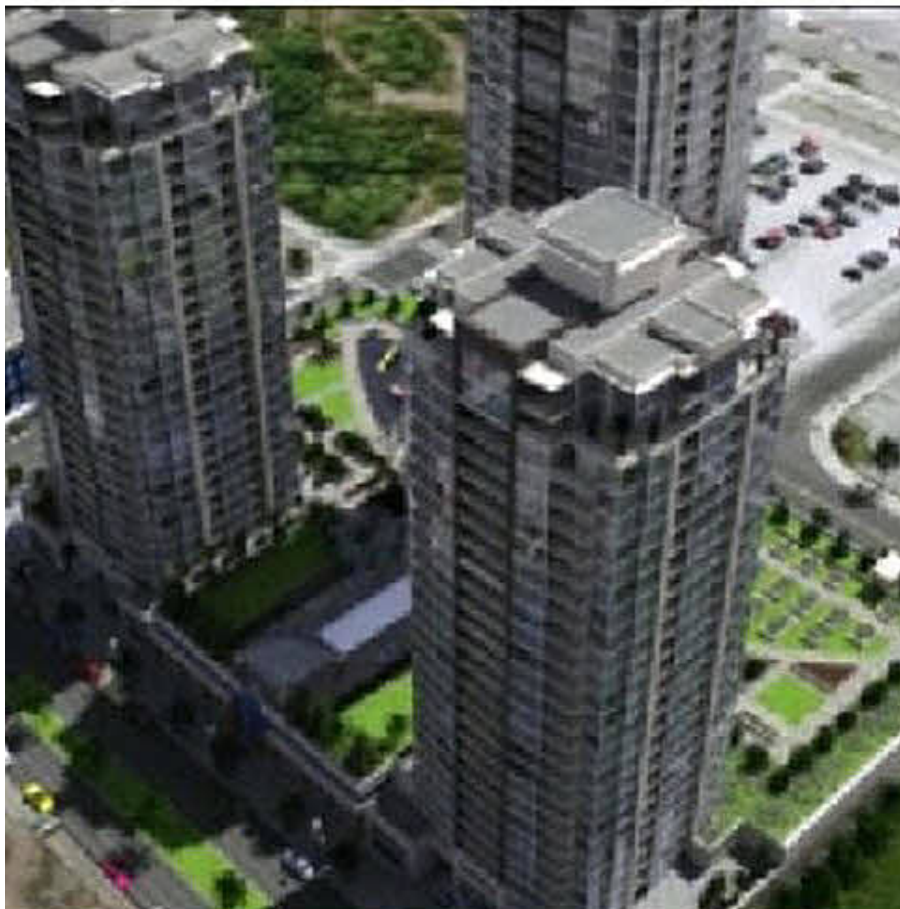


1905 2968 Glen Drive, Coquitlam

\$359,000



Grand Central II ,Brand New HST included in the price 2 BDRM features granite countertops, Over height 8'8" ceilings, floor to ceiling windows, Gas range, Stainless Steel Appliances,Great views, perfect floor plans and 2/5/10 warranty. Centrally located next to Coquitlam Centre, Douglas College, Transit, Parks, Golf Course and Community Centre. Enjoy the gardens, pool, spa & gym on the private terrace.

KEY INFORMATION

MLS® V968327

Residential Attached

North Coquitlam

2 Bedrooms

2 Bathrooms

850 SF

\$244.03 Maintenance Fees

FEATURES

Year Built: 2012

Listed By: rennie & associates realty ltd.



Andy Seto PREC*
604.307.6761
aseto@rennie.com
rennie.com/andyseto

rennie