

# 606 2033 W 10th Avenue, Vancouver

\$749,900



West 10th & Maple - designed by award-winning Bingham Hill Architects. Silver LEED, NE corner home offers timeless appeal & contemporary design to match the unbeatable location. Interiors boast expansive windows for natural light, O/H ceilings, A/C, engineered light wood flrs, polished marble/quartz ctrs, gourmet kitch w/ Bosch appliances & Scavolini Italian cabinets, spa-like bath w/ soaker tub & under-mounted sink. Bedroom offers a spacious walk-in closet with built ins. Den would make a perfect office surrounded by windows. Amenities include gym, clubhouse lounge, children's play area, garden, outdoor living space & more! Unbeatable location w/ Kits Beach, future Arbutus Greenway, shops, easy access to transit & UBC!

## KEY INFORMATION

MLS® R2219202

Residential Attached

Kitsilano

1 Bedroom

1 Bathroom

665 SF

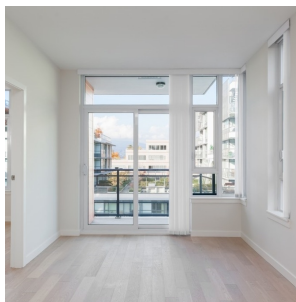
\$232.85 Maintenance Fees

## FEATURES

Year Built: 2017

Views: MOUNTAINS

Listed By: rennie & associates realty ltd.



**Danny Chow** PREC\*  
604.765.2469  
dchow@rennie.com  
rennie.com/dannychow



**Salina Kai** PREC\*  
604.773.7013  
skai@rennie.com  
rennie.com/salinakai

**rennie**