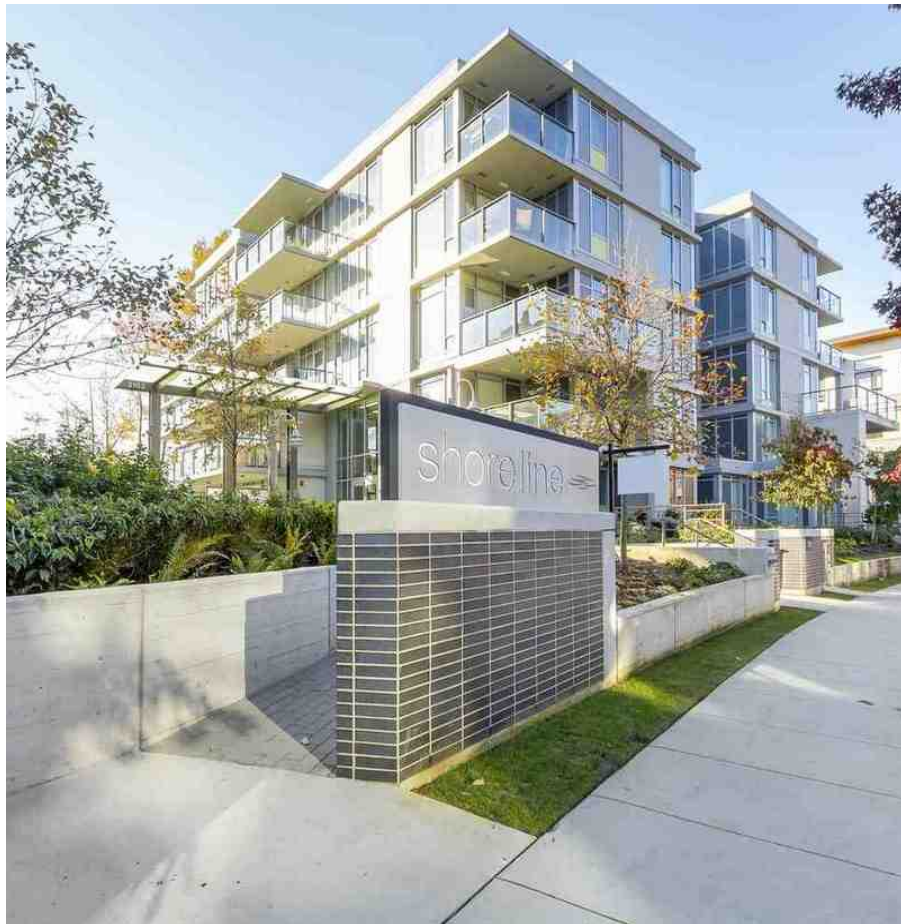


402 3162 Riverwalk Avenue, Vancouver

\$745,000



Stunning corner unit, built by prestigious developer, Polygon. Shoreline is a concrete building ideally located in River District. Just 8 minutes to Metrotown, 9 minutes to Richmond and easy access to Vancouver. Enjoy a troll or jog along riverside trails, Riverfront Park and Everett Crowley Park. A truly waterfront home in South Vancouver. Modern open concept with luxury living style, premium stainless steel kitchen appliances, marble countertop in Master bathroom, quartz countertops and stone back splash in the kitchen. Current owner thoughtfully installed TV millwork, entertainment unit in the living room and a seating bench with storage in the dining room. Rarely on the market. Call today to book your appointment!

KEY INFORMATION

MLS® R2220256

Residential Attached

South Marine

2 Bedrooms

2 Bathrooms

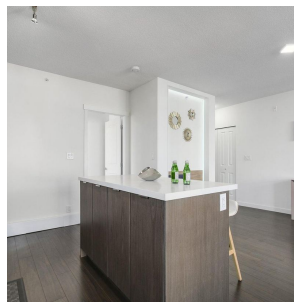
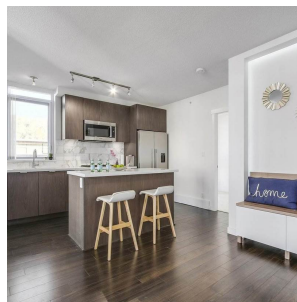
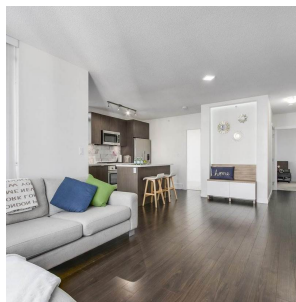
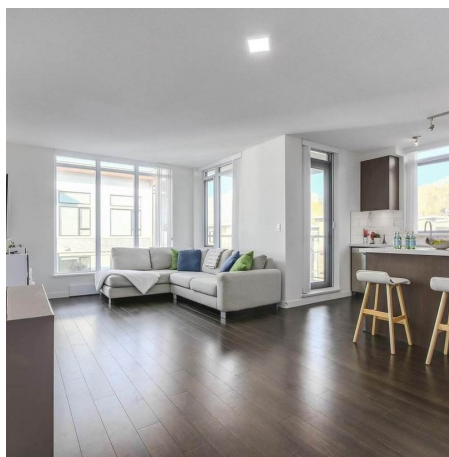
904 SF

\$339.24 Maintenance Fees

FEATURES

Year Built: 2015

Listed By: rennie & associates realty ltd.



Calvin Kan PREC*
604.616.8373
ckan@rennie.com
rennie.com/calvinkan

rennie