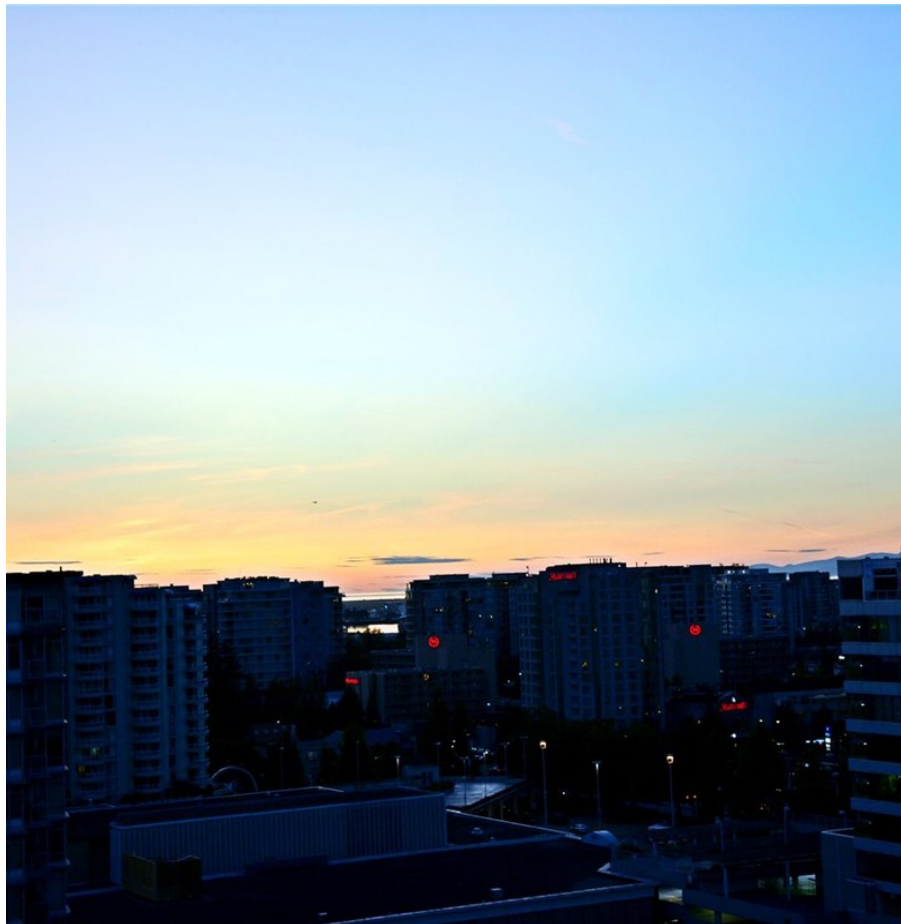


1802 6188 No. 3 Road, Richmond

\$868,000



Penthouse at "Mandarin Residences" North Tower. Spacious 983 sqft 2BR+Flex, bright NW corner unit with 270 sqft balcony & city/mountain views, features 9' ceiling, functional open layout, upgraded A/C, quality laminate floors throughout, Fisher & Paykel s/s appliances, quartz countertops/backsplash & marble bathroom. Amenities: beautiful garden plots, fully equipped fitness center, lounge w/deluxe kitchen & 10 person dining area & rooftop terrace w/garden BBQ area. Located in the heart of downtown Richmond adjacent to Brighthouse Skytrain station (only 23min. from downtown Vancouver), across from Richmond Centre, blocks to Richmond Hospital, Library, Lansdown/Aberdeen/Yaohan Centre, minutes to Minoru Park, Olympic Oval & YVR Airport. Photos from Developer's display suite.

KEY INFORMATION

MLS® R2200721

Residential Attached

Brighthouse

2 Bedrooms

2 Bathrooms

983 SF

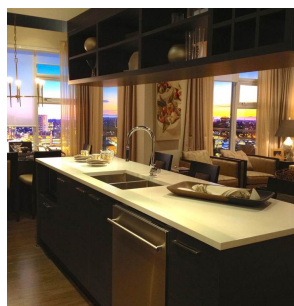
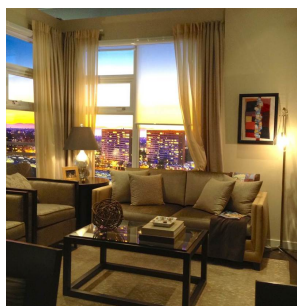
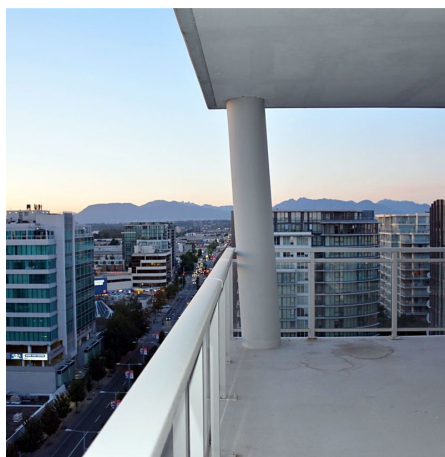
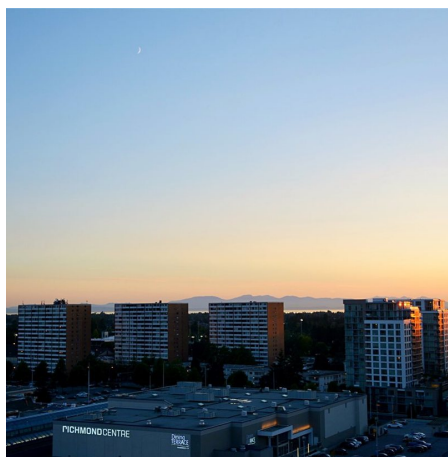
\$379.82 Maintenance Fees

FEATURES

Year Built: 2016

Views: CITY & MOUNTAIN VIEWS

Listed By: rennie & associates realty ltd.



Diana Wang PREC*
604.518.8578
dwang@rennie.com
rennie.com/dianawang

rennie