

419 700 Klahanie Drive, Port Moody

\$639,000



TOP FLOOR UNIT: Large 2 bedroom and 2 bathroom suite in the BOARDWALK building. This North-West facing unit offers stainless appliances, gas cook range, walk-in closet, insuite laundry, crown mouldings, 2 Parking Stalls and 1 Storage Locker. Walking Distance to Skytrain, Shops, Recreation Centre, Park, School and Brewer's Row. Also includes exclusive use of the 15,000 sq ft CANOE CLUB which includes outdoor pool, hot tub, yoga, steam room, fitness centre, tennis courts, 2 guest suites and much more. Pets are welcome!

KEY INFORMATION

MLS® R2201934

Residential Attached

Port Moody Centre

2 Bedrooms

2 Bathrooms

971 SF

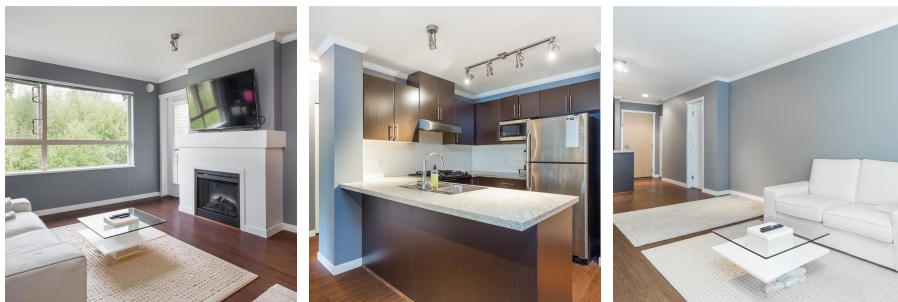
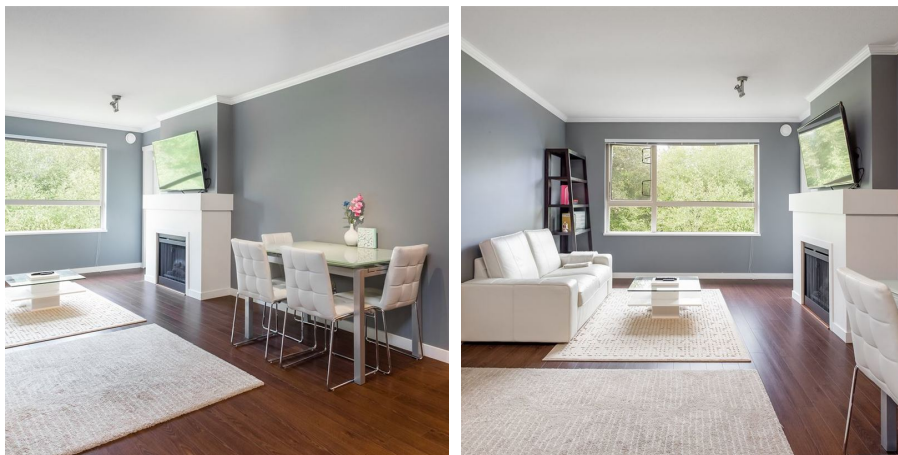
\$290.17 Maintenance Fees

FEATURES

Year Built: 2007

Views: MOUNTAINS/GREEN SPACE

Listed By: rennie & associates realty ltd.



Andy Mah PREC*
604.779.9382
amah@rennie.com
rennie.com/andymah

rennie