

304 9060 Birch Street, Chilliwack

\$299,900



CORNER UNIT! This spacious 3 bed, 2 bath executive style apartment is impressive and in a well managed building. Features include a gourmet kitchen with tons of storage, granite counters & a bar style island. The 9 ft ceilings and huge windows make this suite feel bright & spacious. The master bedroom has a his and hers closet and a large ensuite with a soaker tub and a separate shower. Enjoy the central air, gas fireplace, a computer nook & 2 decks for your outdoor garden including a wrap around deck to enjoy the mountain views! Walking distance to all amenities. A very desirable property to rent or own!

KEY INFORMATION

MLS® R2202811

Residential Attached

Chilliwack

3 Bedrooms

2 Bathrooms

1,218 SF

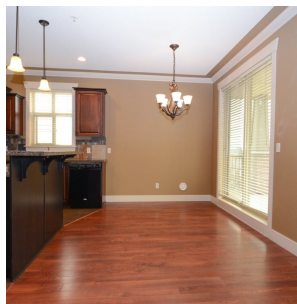
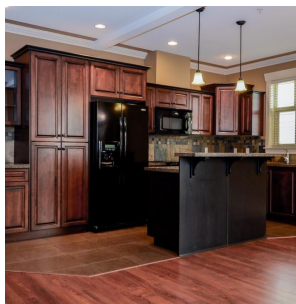
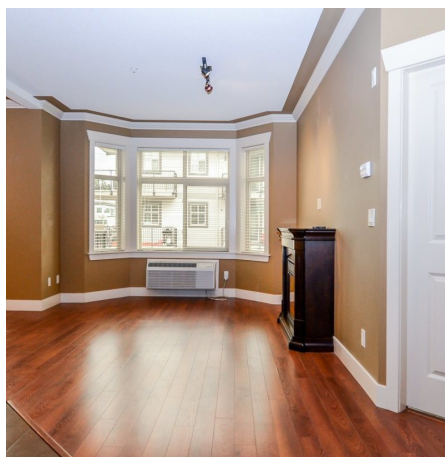
\$282.30 Maintenance Fees

FEATURES

Year Built: 2009

Views: MOUNTAINS AND CITY

Listed By: rennie & associates realty ltd.



Kim Mallory PREC*
604.316.3635
kmallory@rennie.com
rennie.com/kimmallory



Clarke Mallory PREC*
604.316.9917
cmallory@rennie.com
rennie.com/clarkemallory

rennie