

2102 388 Drake Street, Vancouver

\$1,428,000



Spectacular view unit on upper floor rarely on market at Governor's Tower overlooking David Lam Park and False Creek. 2 bedrooms + den, close to a total of 1,200 sf. Floor to ceiling window wrapped around. This is the only unit type on the floor with open balcony close to 109 sf to enjoy and relax. The building was rainscreened in 2010. 24 hr concierge, beautiful landscaped garden, indoor pool, gym and sauna. Central location to access all public amenities: Urban Fare, Canada Line, Daycare, Elementary School, Roundhouse Community Centre, chic restaurants, seawall and more ... Two parking stalls and one storage locker. You can make a dream home in this perfect location. Don't miss it.

KEY INFORMATION

MLS® R2203586

Residential Attached

Yaletown

2 Bedrooms

2 Bathrooms

1,191 SF

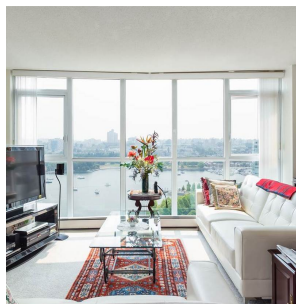
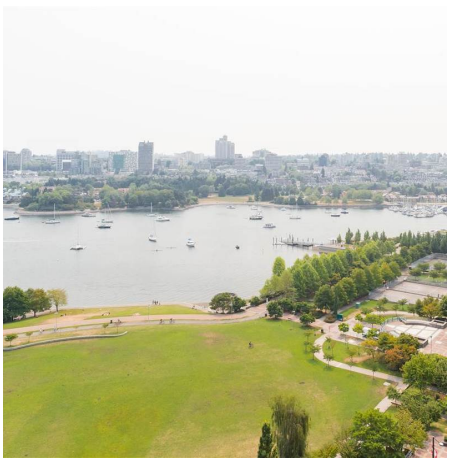
\$637.11 Maintenance Fees

FEATURES

Year Built: 1995

Views: WATER & PARK

Listed By: rennie & associates realty ltd.



Flora Shi
604.720.6808
fshi@rennie.com
rennie.com/florashi

rennie