

# 111 4883 Maclure Mews, Vancouver

\$898,800



This beautifully appointed two bedrooms, two bath "Matthews House" residence boasts a spectacular private patio, Brazilian cherry HW floors, overheight ceilings, open-plan kitchen with S/S KitchenAid appliances and bonus of two parking stalls. Over-height ceilings make this home feel so much larger than 801 sq. feet. Built by reputable Polygon and positioned next door to Quilchena Park, this urban oasis is also walking distance to PW Secondary, Arbutus Shopping Centre, public transit and renowned Arbutus Club. Resort-like facilities include an outdoor pool, gym, bike room secure landscaped grounds and storage locker. This one's truly special! OPEN HOUSE SAT, SEPT 30th 2-4PM

## KEY INFORMATION

MLS® R2204435

Residential Attached

Quilchena

2 Bedrooms

2 Bathrooms

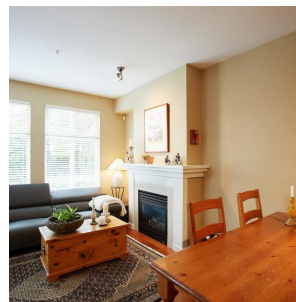
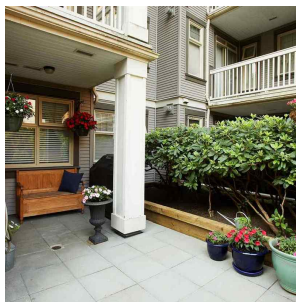
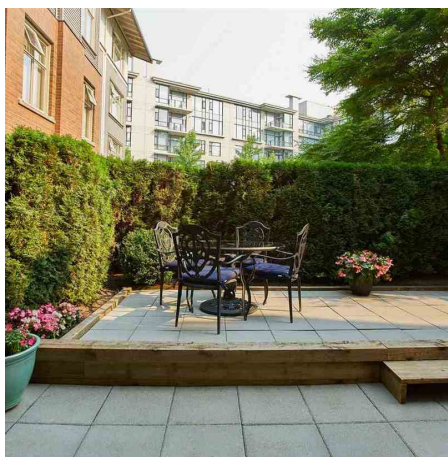
801 SF

\$322.45 Maintenance Fees

## FEATURES

Year Built: 2005

Listed By: rennie & associates realty ltd.



**Phil Chang** PREC\*  
604.754.6678  
pchang@rennie.com  
rennie.com/philchang

**rennie**