

# 1202 1250 Quayside Drive, New Westminster

\$596,800



Right on the BOARDWALK & RIVER VIEWS from every room-even the kitchen! This 2 bdrm/2bth has a wonderful, open lay-out w/no wasted space-accommodating full house size furniture. Lge EAST facing windows keep the unit cool yet very BRIGHT, and the gas fireplace keeps it toasty. The unit is pristine and has been lovingly maintained. Upgrades include S/S appliances, base/crown moldings, full 2nd bth reno, flooring and lighting replacement. Live WORRY FREE as the building is RAINSCREENED, RE-PIPED + elevator and roofing done. Amenities include-pool, gym, sauna, and hot tub. You are steps from the River market, shops, transit and restaurants. Pets/ Rentals NOT allowed. OPEN HOUSE Sat.Sept 30/Sun Oct.1, 2-4pm

## KEY INFORMATION

MLS® R2207043

Residential Attached

Quay

2 Bedrooms

2 Bathrooms

1,043 SF

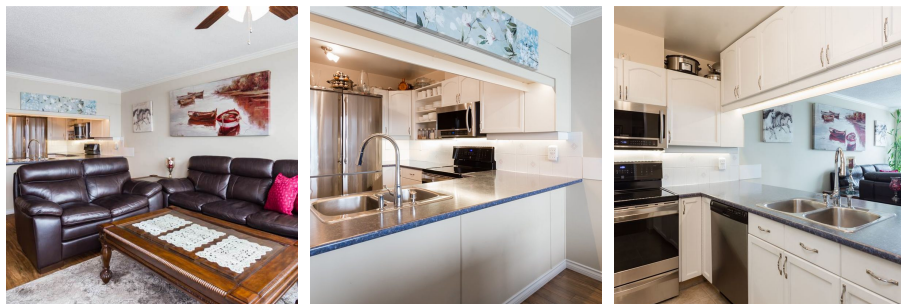
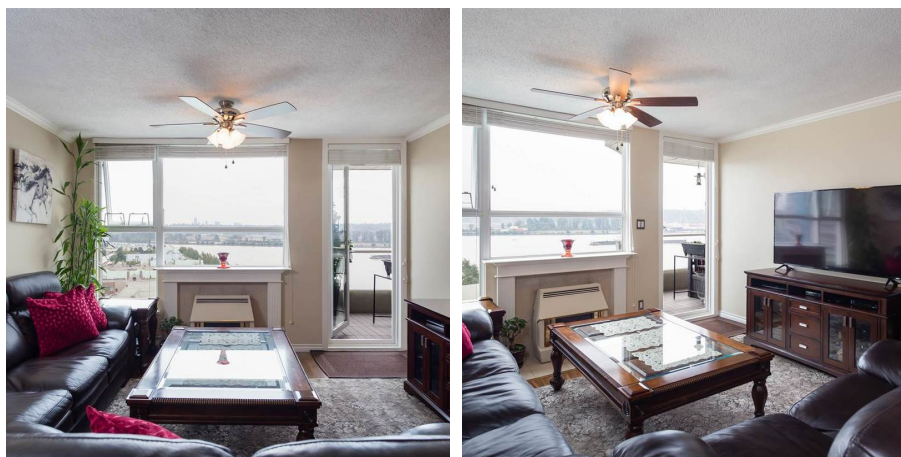
\$343.31 Maintenance Fees

## FEATURES

Year Built: 1989

Views: UNOBSTRUCTED RIVER VIEW

Listed By: rennie & associates realty ltd.



**Vesna Todic**  
604.728.6331  
vtodic@rennie.com  
rennie.com/vesnatodic

**rennie**