

26 6110 138 Street, Surrey

\$599,900



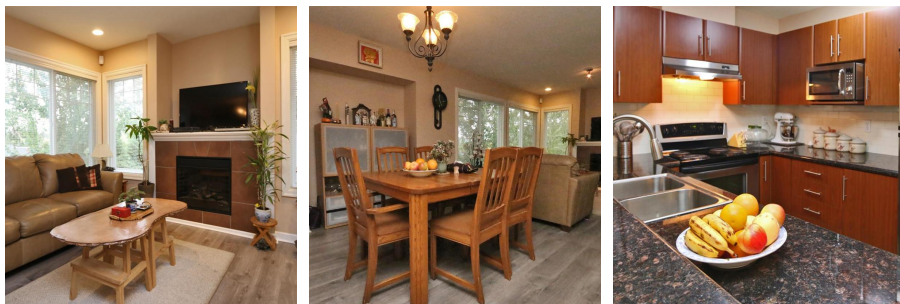
DUPLEX STYLE TOWNHOME W/WALK-OUT BASEMENT SUITE!...This S/N facing home has the best location in SENECA WOODS, nestled in a greenery beautiful neighbourhood, minutes from shopping, schools and all amenities. Spacious 3 bdrm, 4 bath for your growing family. Main floor features 1/2 bath, kitchen, living, dining, large balcony with views of green belt and mountain. Second floor has 3 bdrm 2 bath, w/X-TRA LARGE MASTER BDRM with views, adjacent to a rest area or den. Brand new hardwood floor though out main and 2nd floor. Walk out basement could be 4th bdrm with its own full bath, closet, and huge windows looking out to fully fenced private back yard! DOUBLE CAR GARAGE & STORAGE. Don't miss out this wonderful opportunity! Open House Oct 21/22, Sat/Sun 2-4pm

KEY INFORMATION

MLS® R2215205
Residential Attached
Sullivan Station
3 Bedrooms
4 Bathrooms
1,997 SF

FEATURES

Year Built: 2005
Views: Green belt and Mountains
Listed By: rennie & associates realty ltd.



Hanson Lu PREC*
604.787.2578
hlu@rennie.com
rennie.com/hansonlu

rennie