

1402 138 E Esplanade, North Vancouver

\$1,080,000



Lower Lonsdale home in the sky . . . breathtaking immaculate SE corner suite with unobstructed & unchanging views of Burrard Inlet & cities! Walnut engineered hand-scraped floors whisk you into spacious elegance. Large open concept extended gourmet kitchen boasts stainless steel appliances, granite counter tops, coffee bar, and a custom designed glass backsplash. Large bedrooms are separated to allow privacy. The master bedroom & living room extend onto a large South facing corner balcony w/stunning views. Both spacious bathrooms feature custom designed glass. Strata fee includes exclusive use of Pinnacle Hotel facilities; view gym, hot tub, 5 lane 25m pool & live-fit studio. Close to everything... a must see!

KEY INFORMATION

MLS® R2161323

Residential Attached

Lower Lonsdale

2 Bedrooms

2 Bathrooms

1,038 SF

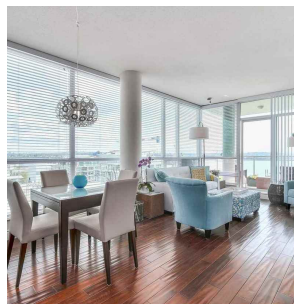
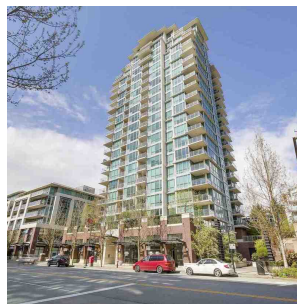
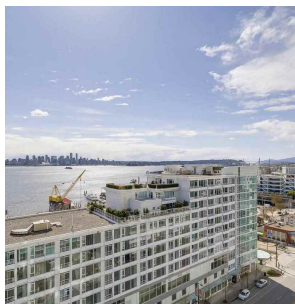
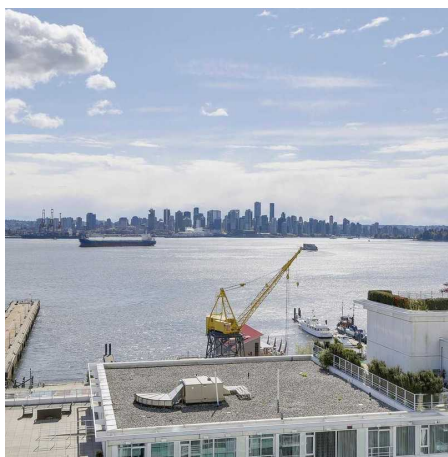
\$538.12 Maintenance Fees

FEATURES

Year Built: 2007

Views: OCEAN & CITIES

Listed By: rennie & associates realty ltd.



Matt Stone
604.782.2614
mstone@rennie.com
rennie.com/mattstone

rennie