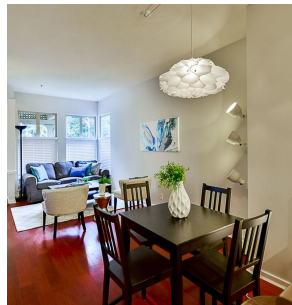
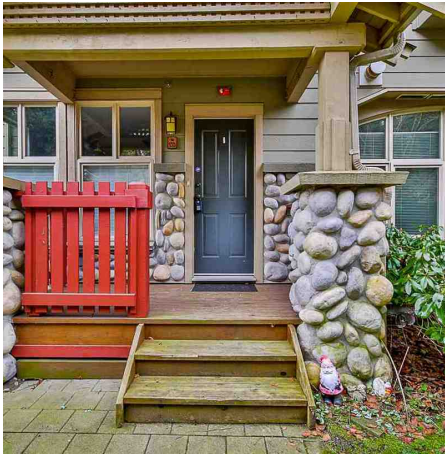


135 15 Sixth Avenue, New Westminster

\$319,999



Beautiful garden townhome style property in the award winning Crofton. This Whistler inspired 1 bdrm home features a green belt, fenced yard, & patio entry w/ 9' ceilings, mahogany floors in LR/DR, gas f/p & open concept kitchen w/ breakfast bar. Equipped w/ a cheater suite, walk-in closet, & high efficiency laundry. Entire home has been newly painted & appointed w/ brand new SS hood fan & gorgeous subway tile backsplash. Bonus: walk directly from parkade into your unit that boasts a very large in-storage area -- no need for locker. Located across from Queens Park & walking distance to Canada Games Pool, McBride shopping plaza, & transit & skytrain. Click multimedia button for more photos and video. OPEN HOUSE Feb 11th & 12th 2-4p.

KEY INFORMATION

MLS® R2134404

Residential Attached

The Heights

1 Bedroom

1 Bathroom

721 SF

FEATURES

Year Built: 1999

Views: GREENWAY

Listed By: rennie & associates realty ltd.



Jane Chu PREC*
778.886.3303
janechu@rennie.com
rennie.com/janechu

rennie