

501 2355 Madison Avenue, Burnaby

\$598,000



Welcome to Oma in sought after Brentwood Park. This open concept South East corner unit has no wasted space featuring 9' ceilings, cozy fireplace, floor to ceiling windows and a large balcony perfect for summer BBQ's. The large kitchen boasts granite counter tops, plenty of storage, and stainless steel whirlpool appliances. Separated bedrooms offer privacy, perfect for roommates or kids. Enjoy amenities which include a courtyard with fountain, swimming lap pool, hot tub, sauna/steam room, gym & TV lounge. Located just steps from shopping, restaurants, transit, Highway 1 and so much more. Pets and rentals welcome. 1 parking and locker included.

KEY INFORMATION

MLS® R2138595

Residential Attached

Brentwood Park

2 Bedrooms

2 Bathrooms

830 SF

\$300.23 Maintenance Fees

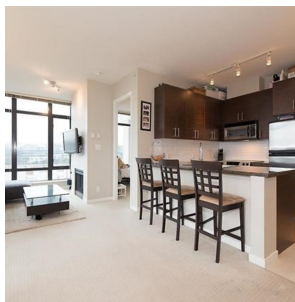
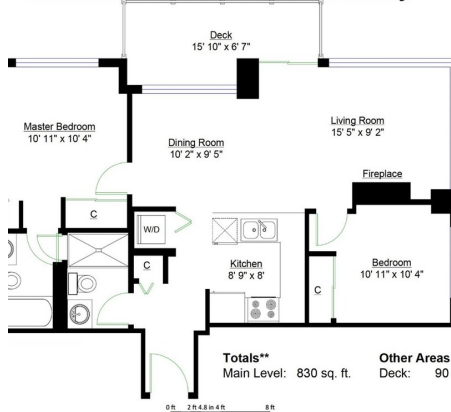
FEATURES

Year Built: 2007

Views: CITY, METROTOWN

Listed By: rennie & associates realty ltd.

#501 – 2355 Madison Avenue, Burnaby



Charlie Kim PREC*
604.767.1531
ckim@rennie.com
rennie.com/charliekim

rennie