

1906 668 Columbia Street, New Westminster

\$379,000



Stunning 1 Bedroom home with WATER & CITY VIEWS in the highly desirable Trapp + Holbrook building located in the centre of historic Downtown New Westminster. Sleek Kitchen features: classy cabinets, quartz counters, glass tile backsplash with stainless steel appliances. Walking distance to the Quay, Coffee Shops & Restaurants. Located just one block from the SKYTRAIN and Pier Park, this bright & open concept floorplan comes equipped with KitchenAid appliance package, in-suite laundry and has a large BALCONY perfect for entertaining. Includes one LARGE parking stall, one storage locker, access to the gym, clubhouse and ROOFTOP GARDEN. Pets are welcome! Open House Saturday, May 13th 10:00am-12:00pm & Sunday, May 14th 2:00-4:00pm. SEE VIRTUAL TOUR!

KEY INFORMATION

MLS® R2164032

Residential Attached

Quay

1 Bedroom

1 Bathroom

520 SF

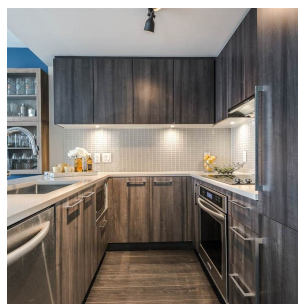
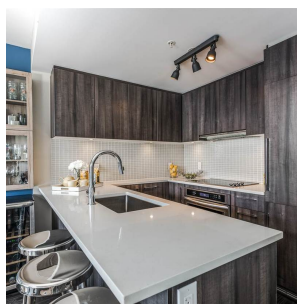
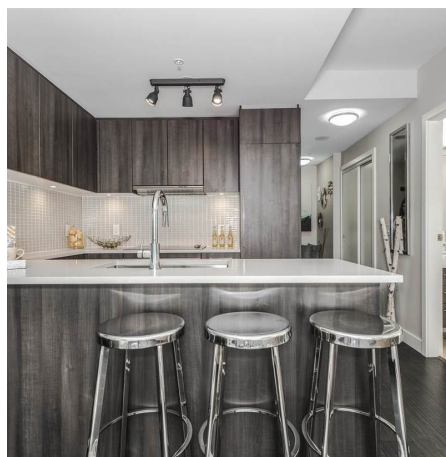
\$161.60 Maintenance Fees

FEATURES

Year Built: 2015

Views: STUNNING WATER & CITY VIEWS

Listed By: rennie & associates realty ltd.



Reggie Tanzola PREC*
778.917.6889
rtanzola@rennie.com
rennie.com/reggietanzola



Shelly Vellani PREC*
604.710.3681
svellani@rennie.com
rennie.com/shellyvellani

rennie