

# 207 535 Smithe Street, Vancouver

\$520,000



Not your usual one bedroom apartment. Fantastic square layout with 9 foot ceilings, corner unit with gorgeous outlook. Best location in Downtown, across from future park, steps to yaletown and one block from Telus building. Literally in the middle of the coolest restaurants and cafe's in Vancouver. Shows like new. Do not miss this fantastic unit of Dolce!

## KEY INFORMATION

MLS® R2106979

Residential Attached

Downtown

1 Bedroom

1 Bathroom

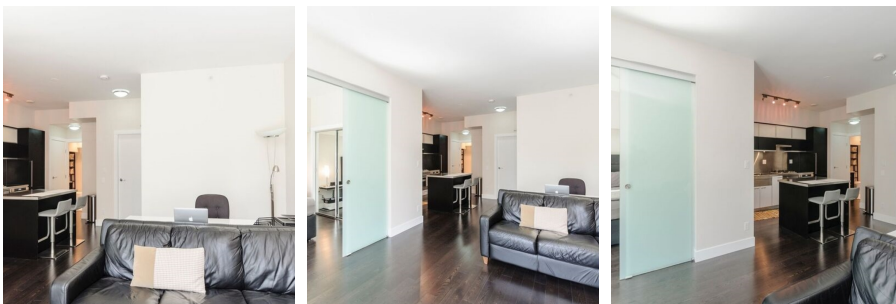
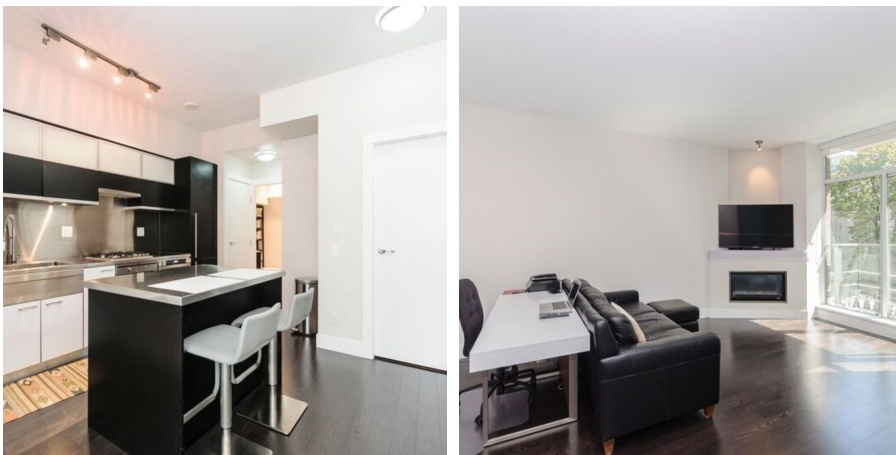
650 SF

\$280.00 Maintenance Fees

## FEATURES

Year Built: 2011

Listed By: rennie & associates realty ltd.



**Chris Chen**  
604.374.3777  
cchen@rennie.com  
rennie.com/chrischen

**rennie**