

# 1411 1708 Columbia Street, Vancouver

\$488,000



East facing Open Floor Plan unit offering stunning views of False Creek and Mountains. Located in the heart of False Creek, on top of JJ Bean, steps away from Canada Line, Urban Fare, London Drugs, Tap and Barrel, Flying Pig and a short trip to Downtown Vancouver. Comes with one parking. First showing Saturday, January 16 at 12-12:30.

## KEY INFORMATION

MLS® R2025304

Residential Attached

False Creek

1 Bedroom

1 Bathroom

520 SF

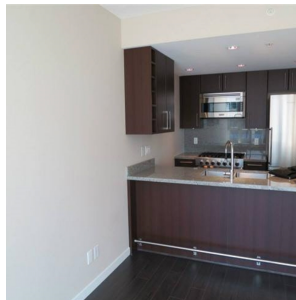
\$256.93 Maintenance Fees

## FEATURES

Year Built: 2013

Views: WATER & MOUNTAINS

Listed By: rennie & associates realty ltd.



**Gerald Soong**

604.761.5803

[gsoong@rennie.com](mailto:gsoong@rennie.com)

[rennie.com/geraldsoong](http://rennie.com/geraldsoong)

**rennie**