

18 6888 Robson Drive, Richmond

\$928,000



The most favorite and desired number '18' is just for this unit. Well kept 1,654 sq.ft 'Stanford Place' bright & quiet corner townhouse built by Polygon in prestigious Terra Nova. N, S & E exposure facing courtyard. 4 good size bedrooms with 3 full bath. Newly painted interior. Recently renovated with quartz kitchen countertop & flash, stainless steel faucet & sink with water filter, laminate flooring throughout family room area, antiqued floor tiles in cooking area. Large south facing sundeck connected to kitchen make your summer BBQ extension. Side-by-side double garage. Spul'u'kwuks Elementary & Burnett Secondary school catchment. Great complex! Great unit number! Call today and this will be end of your search!

KEY INFORMATION

MLS® R2027282

Residential Attached

Terra Nova

4 Bedrooms

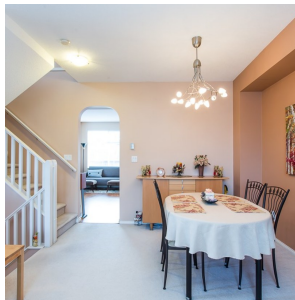
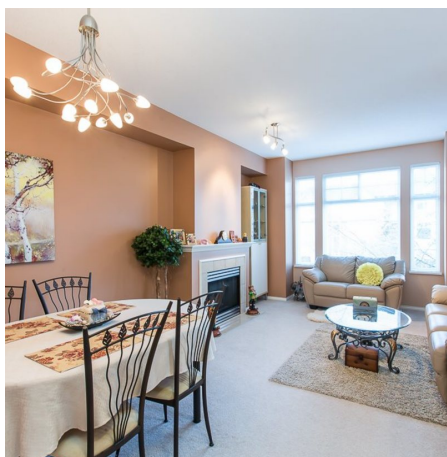
3 Bathrooms

1,654 SF

FEATURES

Year Built: 2001

Listed By: rennie & associates realty ltd.



Justine Loo
604.836.1399
jloo@rennie.com
rennie.com/justineloo

rennie