

Ph4 285 E 10th Avenue, Vancouver

\$1,399,900



The Independent - located in the heart of Mount Pleasant, a highly walkable neighbourhood, steps from vibrant Main Street shopping, dining, and major public transit routes (10 minute walk to Skytrain). Modern interiors include custom millwork wardrobes in entry and bedrooms, laminate flooring throughout, custom designed, crafted millwork RizeModular storage solution in many homes. Kitchens include Italian cabinetry, stainless steel appliance package with Porter & Charles induction cooktops. With a half acre "backyard" and 3,300 sq ft of indoor amenity space, this will be a fabulous place to call home. Come and see for yourself today why this is Mount Pleasant's most exciting new community!

KEY INFORMATION

MLS® R2030177

Residential Attached

Grandview Woodland

2 Bedrooms

2 Bathrooms

1,581 SF

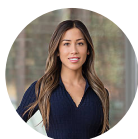
\$624.45 Maintenance Fees

FEATURES

Year Built: 2017

Views: CITY

Listed By: rennie & associates realty ltd.



Jessica Lozada PREC*
604.360.0025
jlozada@rennie.com
rennie.com/jessicalozada

rennie