

# 302 5288 Beresford Street, Burnaby

\$625,000



Located just steps from the skytrain, 1 stop away from Metrotown Shopping Center. High quality & exceptional living at an affordable price. The gourmet kitchen with solid wood veneer cabinetry, polished quartz counters, under mount sinks & Whirlpool stainless appliances. Relax & unwind in the spa-inspired bathroom with imported porcelain/ceramic tiles and KOHLER fixtures. Location, location, location with affordable price & like brand new condition, plus 2 parking, 1 locker. Open House Sat Nov 10 and Sun 11th 14:00 to 16:00.

## KEY INFORMATION

MLS® R2321466

Residential Attached

Metrotown

2 Bedrooms

2 Bathrooms

766 SF

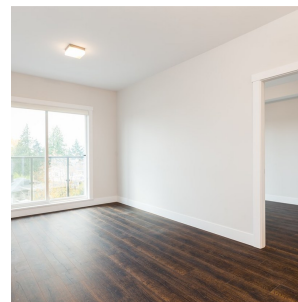
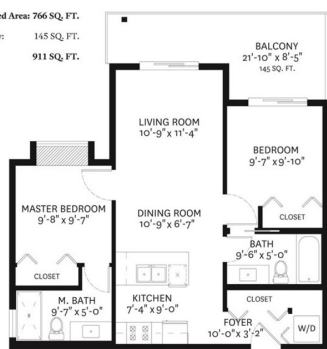
\$258.79 Maintenance Fees

## FEATURES

Year Built: 2014

Listed By: rennie & associates realty ltd.

Finished Area: 766 SQ. FT.  
Balcony: 145 SQ. FT.  
Total: 911 SQ. FT.



**Tony Liang** PREC\*  
604.781.9988  
tliang@rennie.com  
rennie.com/tonyliang

**rennie**