

# 605 6838 Station Hill Drive, Burnaby

\$549,888



ONE BEDROOM + DEN totally renovated corner apartment with soaring high 9' ceilings is simply flooded with light & VIEWS to Mount Baker. The DEN has a window & spacious for another bedroom, office or dining area. Comes with gas fireplace, 1 parking & 1 locker. Amenity rich, this Ledcor built complex at 'City in the Park' is a Georgie award winner boasting; swimming pool & hot tub located under a glass conservatory, exercise room, movie room, guest suite, ping-pong, gorgeous landscaped setting & all within walking distance to Edmonds Skytrain station & Heights Elementary School. It is ready to move in, just name your dates!

## KEY INFORMATION

MLS® R2325040

Residential Attached

South Slope

1 Bedroom

1 Bathroom

800 SF

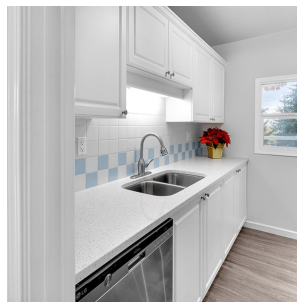
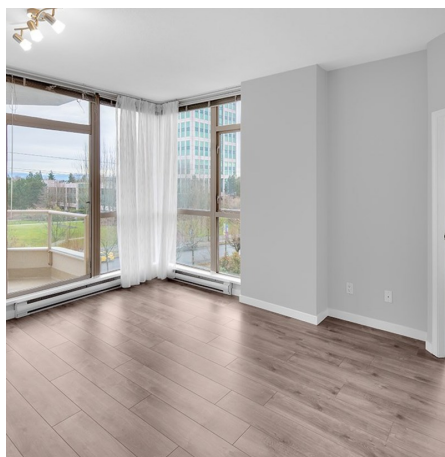
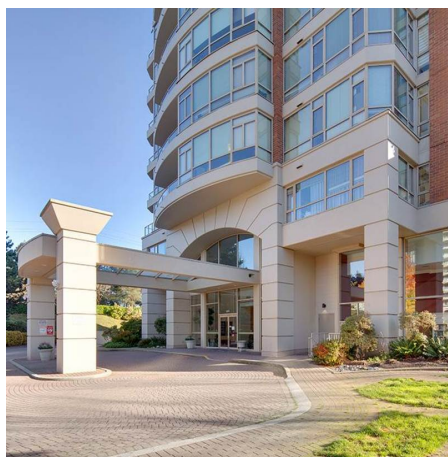
\$333.77 Maintenance Fees

## FEATURES

Year Built: 1996

Views: CITY

Listed By: rennie & associates realty ltd.



**Reggie Tanzola** PREC\*  
778.917.6889  
rtanzola@rennie.com  
rennie.com/reggietanzola

**rennie**