

3108 5470 Ormidale Street, Vancouver

\$729,000



HIGHEST AVAILABLE of this highly coveted NW CORNER DISPLAY SUITE LAYOUT w/ UNOBSTRUCTED VIEWS of MOUNTAINS/ CITY/DOWNTOWN!! Welcome to Wall Centre Park Tower 3 (The Final Tower) Spacious/separate BR's, TONS of WINDOWS and corner balcony. Designed to LEED Gold Standards by award-winning GBL Architects featuring floor 2 ceiling windows, cocoa wood-tone laminate flrs, shaker-style cabinetry, quartz/marble counters & stainless steel appl (gas range). World Class Amenities incl: visitors parking, gym, party room, meeting rms, caretake & rooftop garden plots. One parking (direct P2 U/G) storage within building included! Just mins from transit, parks & shopping/dining. All that's missing is you!

KEY INFORMATION

MLS® R2325623

Residential Attached

Collingwood

2 Bedrooms

2 Bathrooms

749 SF

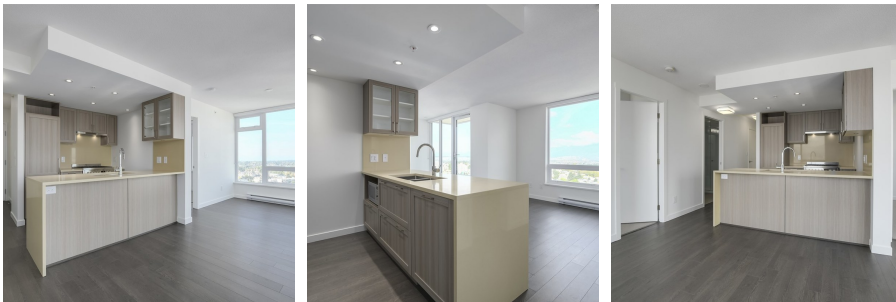
\$357.22 Maintenance Fees

FEATURES

Year Built: 2018

Views: UNOBSTRUCTED MOUNTAIN/DOWNTOWN

Listed By: rennie & associates realty ltd.



Derek Kai PREC*
604.868.1666
dkai@rennie.com
rennie.com/derekkai

rennie