

496 Glencoe Drive, Port Moody

\$999,000



Offered is a spacious family home sitting on a 9,100 sq ft lot in the desirable Glenayre area of Port Moody! This original home is in great condition and had a new roof installed in March. The house is over 2,000 square feet divided into 3 bedrooms upstairs and a large basement with 2 more large rooms downstairs. Enjoy coffee on your deck overlooking your private and treed backyard! Hardwood throughout and a bright basement with independent access (easy to suite) complete this package. Located right beside French Immersion, Glenayre and Port Moody Secondary, Rocky Point Park, trails, the marina and minutes to the sky train and Lougheed Mall. Open House Saturday February 9 2019 2-4pm

KEY INFORMATION

MLS® R2328235

Residential Detached

Glenayre

4 Bedrooms

2 Bathrooms

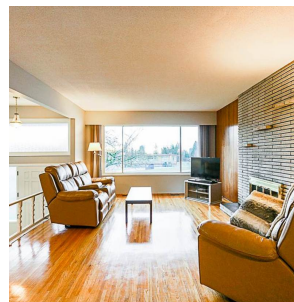
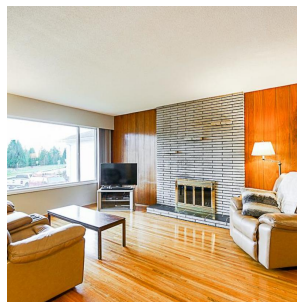
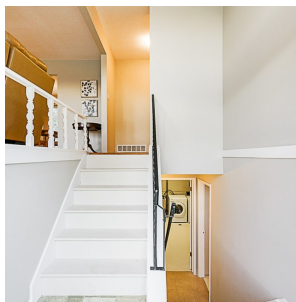
2,106 SF

9,155 SF Lot

FEATURES

Year Built: 1967

Listed By: rennie & associates realty ltd.



Jordan Wong
778.378.6888
jwong@rennie.com
rennie.com/jordanwong

rennie