

2208 5470 Ormidale Street, Vancouver

\$739,000



Bright & spacious, Beautiful Northwest facing 2 bedroom unit in Wall Centre's Central Park, Tower 3. Beautiful view in every room in this unit. Features include engineered hardwood floors, stylish built-in appliances, S/S gas range, garburator, LED pot lights, quartz and marble countertops, in-suite laundry, balcony, one parking stall, one storage locker and more. Conveniently located just close to Central Park, shopping, Skytrain Station and major bus routes. Also just couple minutes drive to Metrotown Mall. Open house jan 19 sat 2-4pm, 2019

KEY INFORMATION

MLS® R2329180

Residential Attached

Collingwood

2 Bedrooms

2 Bathrooms

752 SF

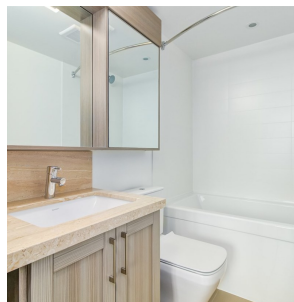
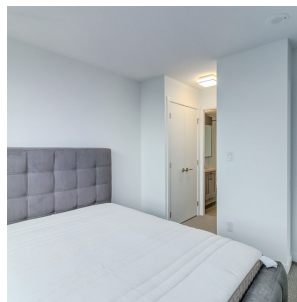
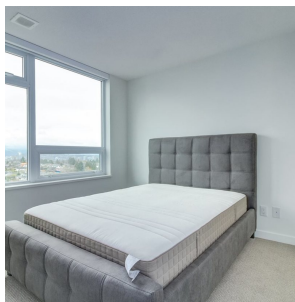
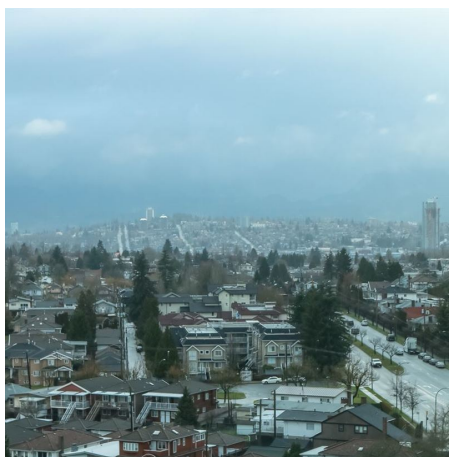
\$357.22 Maintenance Fees

FEATURES

Year Built: 2018

Views: Mountain, City

Listed By: rennie & associates realty ltd.



Calvin Kan PREC*
604.616.8373
ckan@rennie.com
rennie.com/calvinkan

rennie