

604 10 Renaissance Square, New Westminster

\$498,000



Modern, Soho New York inspired SUB-PENTHOUSE with WATER VIEWS in the heart of New Westminster. This 1 Bed & Den is like a 2 Bedroom Home & is one of the LARGEST most functional floorplans on the market! This home features 14 ft floor to ceiling windows! Featuring: Cozy Gas Fireplace, Kohler Fixtures, Granite counter tops, Engineered hardwood floors, Stainless steel appliances & Large Patio Deck perfect for entertaining with charming views of the WATER! Bonus: Spacious walk in closet & generous sized Storage Centre right inside your home. Includes: 1 secured parking, Short walk to the Quay, Skytrain and waterfront trails along the Fraser River! Open House Sat Jan 19th 1-3 pm & Sunday Jan 20 10:45-11:45am SEE VIRTUAL TOUR!

KEY INFORMATION

MLS® R2332537

Residential Attached

Uptown

1 Bedroom

1 Bathroom

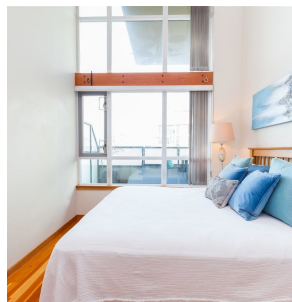
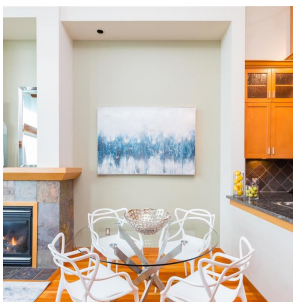
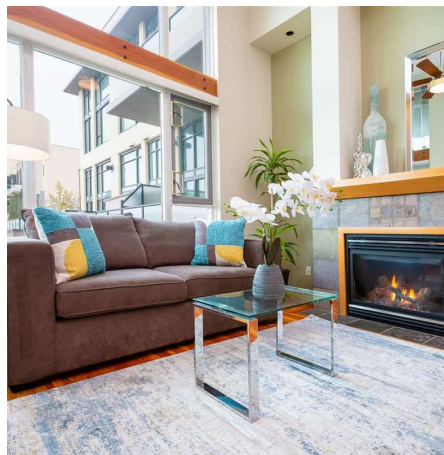
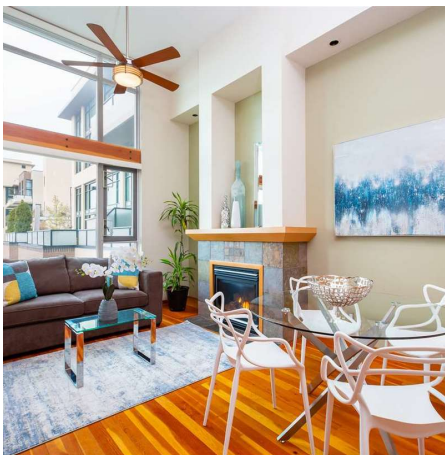
744 SF

\$259.54 Maintenance Fees

FEATURES

Year Built: 2006

Listed By: rennie & associates realty ltd.



Shelly Vellani PREC*

604.710.3681

svellani@rennie.com

rennie.com/shellyvellani

rennie