

503 8850 University Crescent, Burnaby

\$599,000



A great community development by Intergulf. A gorgeous 2 bedroom + 2 Bathroom corner unit in modern urban neighbourhood with an elementary school, childcare, shops and parks just steps from your door. And you have exclusive access to SFU's extensive array of recreational and cultural amenities. The Peak offers stunning views of water and mountains. Two-storey wellness centre includes a gym, separate men's and women's changing rooms and a yoga room, all overlooking the lush landscaped terrace. A brand new unit in a great neighbourhood.

KEY INFORMATION

MLS® R2337261

Residential Attached

Simon Fraser University

2 Bedrooms

2 Bathrooms

840 SF

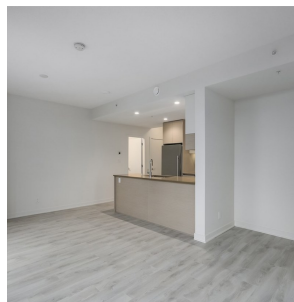
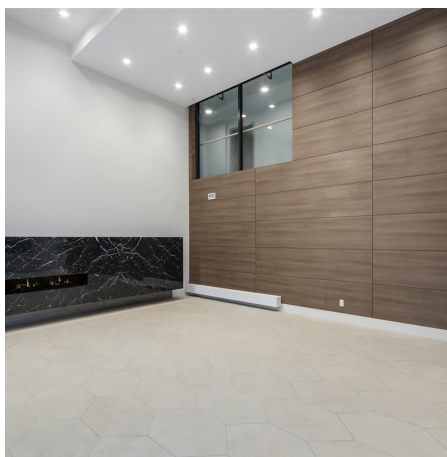
\$340.68 Maintenance Fees

FEATURES

Year Built: 2019

Views: WATER AND MOUNTAIN

Listed By: rennie & associates realty ltd.



Charlie Kim PREC*
604.767.1531
ckim@rennie.com
rennie.com/charliekim

rennie