

102 8850 University Crescent, Burnaby

\$480,000



Welcome to THE PEAK - A BRAND NEW & highly desirable development by renowned developer, Intergulf. This large, open & efficient 1 bed+den home expands over 654sf of living area, w/a large 91sf balcony & faces the quiet & private side of the building. Appointed w/floor to ceiling windows, elegant wide-plank laminate floors, large bdrm w/ensuite & double closets, sleek modern kitchen w/quartz counters, S/S appliances & tons of storage throughout. Over 10,000sf of indoor & outdoor amenities incl 2-storey gym & wellness centre, outdoor yoga & meditation space, a conservatory for studying, theatre room, games lounge, dining & entertainment lounge + more. Close to all SFU amenities & shops on University High Street. 1 pkg + 2 lockers included! DON'T MISS OUT! OPEN Sat & Sun (Feb 23&24) 2-4pm

KEY INFORMATION

MLS® R2338257

Residential Attached

Simon Fraser University

1 Bedroom

1 Bathroom

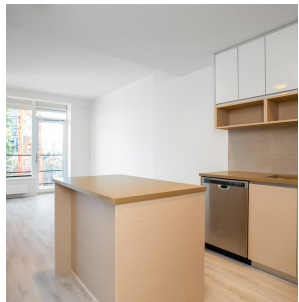
654 SF

\$266.43 Maintenance Fees

FEATURES

Year Built: 2018

Listed By: rennie & associates realty ltd.



Ryan Wong PREC*
604.551.7966
rwong@rennie.com
rennie.com/ryanwong

rennie