

3001 660 Nootka Way, Port Moody

\$728,800



Penthouse unit with stunning views in Nahanni by Polygon in the heart of Port Moody. Beautifully updated with new laminate floors and blinds 2 bd & 2 bth open floor plan. Modern kitchen with granite countertop and stainless steel appliances. Ideally located close to the shops & restaurants of Newport Village, the convenience of nearby shopping mall and all parks and trails of Port Moody. Steps to library and transit of West Coast Express on 22 min to downtown. Great resort style amenities at the 15,000 sf Canoe Club plus 5,000 sf of private amenities such as indoor basketball court, tennis court, outdoor pool & spa, fireside billiards lounge amphitheater room, furnished guest room & more.

KEY INFORMATION

MLS® R2341304

Residential Attached

Port Moody Centre

2 Bedrooms

2 Bathrooms

929 SF

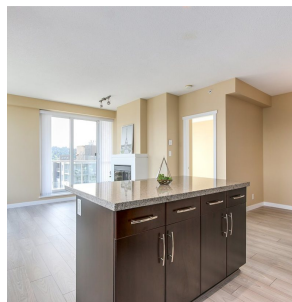
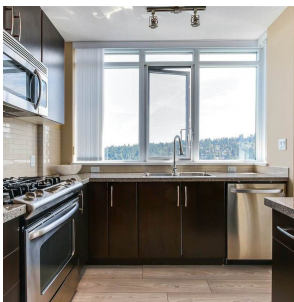
\$268.26 Maintenance Fees

FEATURES

Year Built: 2009

Views: MOUNTAIN, CITY & WATER

Listed By: rennie & associates realty ltd.



Charlie Kim PREC*
604.767.1531
ckim@rennie.com
rennie.com/charliekim

rennie