

4350 Salish Drive, Vancouver

\$678,000



Great west side family home! Strategically located in Musqueam Park, next to Shaughnessy Golf Course and ocean beach. Close to UBC, Crofton, public schools, Dunbar and Kerrisdale shopping district, restaurants and Pacific Spirit Park. Very well maintained spacious bungalow with walkout basement. Updated in the past include roof, heating system, piping and electrical. Main floor has 2 bedrooms, 2 baths, plus office and den (currently used as 3rd bedroom). Downstairs is set up for a self contained 3 bedroom suite, sliding door to a sunny south west rear yard. Leasehold not prepaid to 2064. Current lease payment is \$22,520 per year. Open House: 2-4pm Sun, Mar 3.

KEY INFORMATION

MLS® R2342554

Residential Detached

University

5 Bedrooms

3 Bathrooms

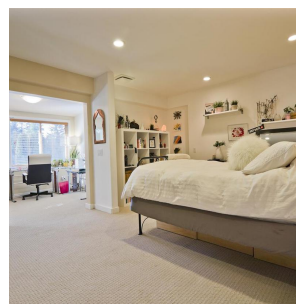
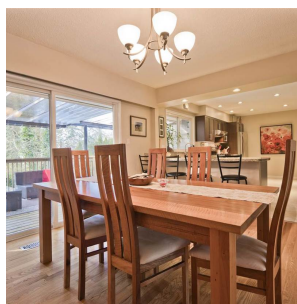
3,800 SF

11,169 SF Lot

FEATURES

Year Built: 1969

Listed By: rennie & associates realty ltd.



Hanson Lu PREC*
604.787.2578
hlu@rennie.com
rennie.com/hansonlu

rennie