

1018 8800 Hazelbridge Way, Richmond

\$788,000



South Estates, the final phase of Concord Gardens, completes this masterpiece in Richmond's Largest World Class Community. Surrounded by beautiful water garden landscaping and meandering pedestrian pathways, come home to a tranquil piece of mind. The amazing 20,000 sq ft Diamond Club, an ultimate playground for entertainment, is an impressive collection of amenities such as a bowling alley, badminton court, indoor swimming pool, private screening, and more. Purposefully designed, with attention to the finest details and accents. You will Appreciate all the little things through timeless design and thoughtfully planned functionality. This south facing 2 bdrm, 2 bath has 891sft interior area plus a 150sft outdoor balcony. One parking and locker included.

KEY INFORMATION

MLS®

Residential Attached

West Cambie

2 Bedrooms

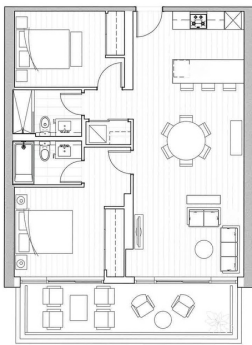
2 Bathrooms

891 SF

\$378.00 Maintenance Fees

FEATURES

Listed By: rennie & associates realty ltd.



Hanson Lu PREC*
604.787.2578
hlu@rennie.com
rennie.com/hansonlu

rennie