

212 3136 Kingsway, Vancouver

\$478,800



Welcome to Lewarde Court! This top floor apartment faces the open and quiet courtyard with mountain views! Enjoy the convenience of your own front door & an open layout with in suite laundry, new lam flooring and fresh paint just done!!!! Perfectly located in quiet side of complex in Vancouver's Collingwood neighbourhood. Close to Collingwood Park, Safeway, St Mary's church, Joyce-Collingwood Skytrain Station, Central Park, Starbucks and so much more! Rentals Allowed (Appx \$2000/mo)! Investors welcome! Quick close ok & potential for future development. Call today to arrange your private viewing!

KEY INFORMATION

MLS® R2345299

Residential Attached

Collingwood

2 Bedrooms

1 Bathroom

797 SF

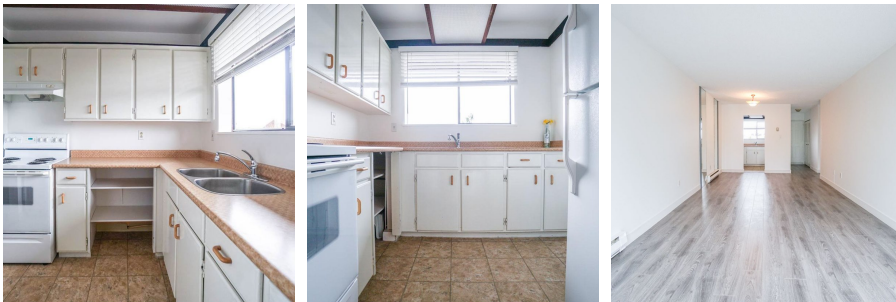
\$338.00 Maintenance Fees

FEATURES

Year Built: 1977

Views: Mtn/North View

Listed By: rennie & associates realty ltd.



Brandon Price PREC*
604.765.9555
bprice@rennie.com
rennie.com/brandanprice

rennie