

# 706 2378 Alpha Avenue, Burnaby

\$779,000



Milano building by Solterra Developments. Over 300 SF wrap around balcony with 3 glass sliding full opening doors to provide seamless interior/ exterior living with unobstructed full views of the city. This 2 bedroom 2 bathroom, Spacious 770 SF 1 parking 1 locker included. Centrally located minutes walking to the brand new Brentwood Mall set to open 2019. Milano boasts high 9' ceilings, Air-conditioning, stunning Italian kitchen, premium appliances: Liebherr fridge & Fulgor wall oven, 5 burner gas top. Great amenities: guest suite available, recreation room with kitchen, lounging areas, games room, outdoor court yard, putting green, exercise centre, hot tub, seam/ sauna and EV charging. Brentwood Skytrain is across the street!

## KEY INFORMATION

MLS® R2346070

Residential Attached

Brentwood Park

2 Bedrooms

2 Bathrooms

770 SF

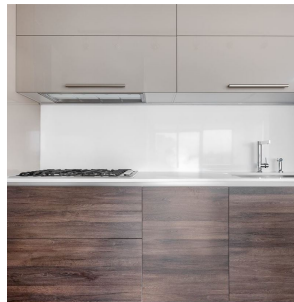
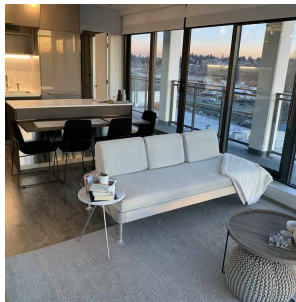
\$352.00 Maintenance Fees

## FEATURES

Year Built: 2018

Views: CITY VIEWS

Listed By: rennie & associates realty ltd.



**Simon Lai** PREC\*  
778.881.3603  
slai@rennie.com  
rennie.com/simonlai

**rennie**