

2866 Sotao Avenue, Vancouver

\$799,900



Beautifully updated 1,395sqft 3bedrms 3bath 3level RowHome-Style Townhouse. Just starting out or slowing down - Freehold Land and Owners-only residing in this development. This home is 3 bdrms upstairs with 2 full bath, kitchen with extra pantry cabinets, large dining rm opening to deep living room on the main. Rec/media rm downstairs with full bath. Updates include flooring, modernized kitchen and appliances. Enjoy the outdoors and go outside, this vibrant community is just steps from Riverside Park and the waterfront. Walk, cycle, jog over to River District, go for a hike at Everett Crowley Park and more shopping up at Champlain Mall. Schools - David Oppenheimer Elementary & David Thompson Secondary.

KEY INFORMATION

MLS® R2346339

Residential Attached

South Marine

3 Bedrooms

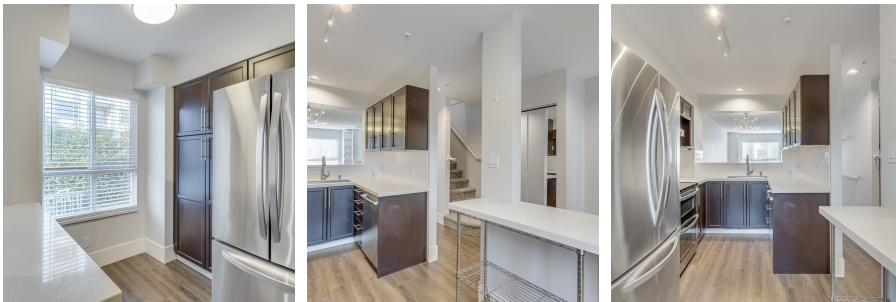
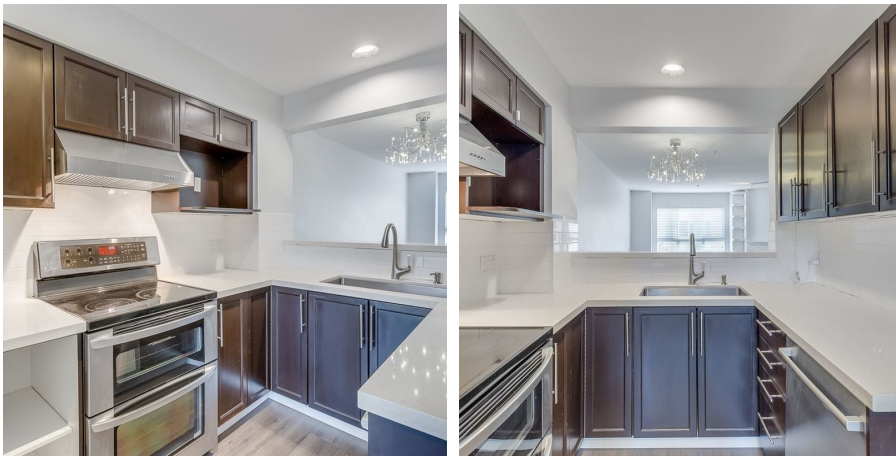
3 Bathrooms

1,394 SF

FEATURES

Year Built: 1997

Listed By: rennie & associates realty ltd.



Howard Don
604.786.9998
hdon@rennie.com
rennie.com/howarddon

rennie