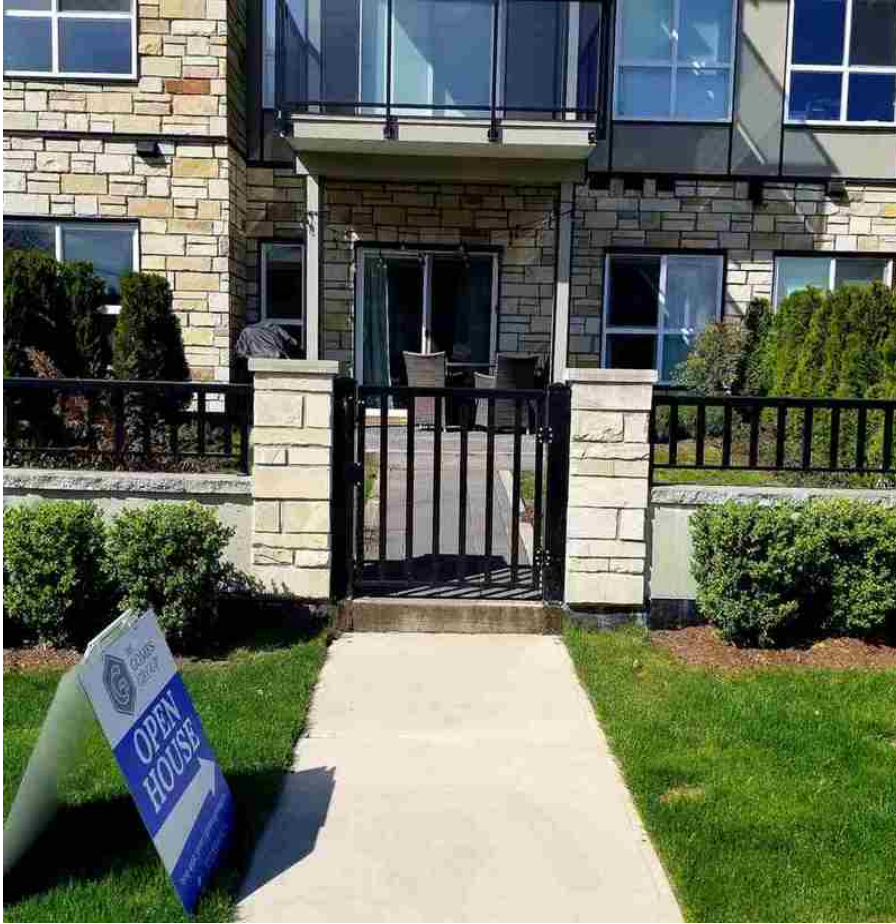


102 12310 222 Street, Maple Ridge

\$309,900



ONLY 2 YRS OLD LUXURY GROUND FLOOR CONDO! NO GST! WEST CENTRAL area w/ the most modern open living space. Tucked away in a quiet residential pocket, this beautifully finished 1-bed 1-bath condo w/ 583 sqft. features a large size SOUTH FACING PRIVATE PATIO W/ GREEN SPACE and SEPARATE ENTRY. Newer s/s appliances, in-suite laundry, white quartz counters with matte white finished cabinets, deep double sink w/ ultra-quiet garburator, LED lighting, 9-foot ceilings, large windows, and elegant tile and laminate. Enjoy the two air conditioning units and heat with the remote-control regulations. 1 secured parking and 1 storage locker. Walking distance to transit, shops, leisure center, banks, restaurants, schools and West Coast Express stop.

KEY INFORMATION

MLS® R2347704

Residential Attached

West Central

1 Bedroom

1 Bathroom

583 SF

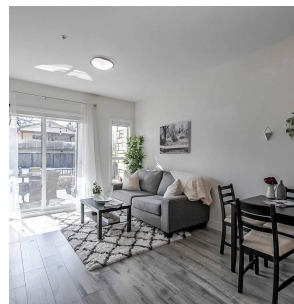
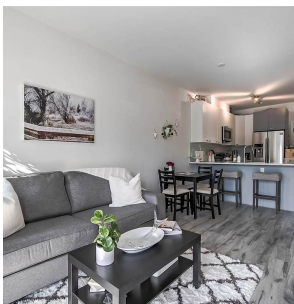
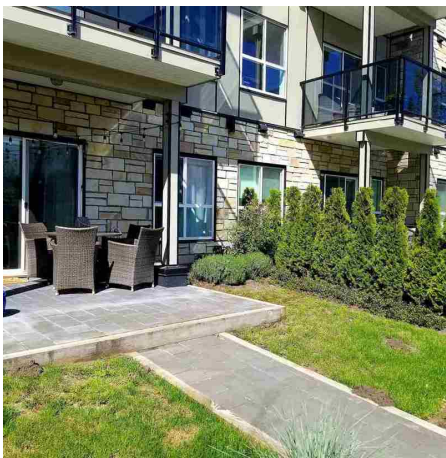
\$172.63 Maintenance Fees

FEATURES

Year Built: 2017

Views: SOUTHVIEWS

Listed By: rennie & associates realty ltd.



Irene De Guzman

604.720.1996

ideguzman@rennie.com

rennie.com/irenedeguzman

rennie