

402 2055 Pendrell Street, Vancouver

\$799,000



Location Location Location! Enjoy a quality of life unlike any other in downtown Vancouver at Panorama Place, an exceptionally well-run concrete building located on a quiet cul-de-sac directly on Stanley Park and just a half-block to English Bay Beach. This bright and spacious 828 sqft 1 bed/1 bath features NEW wrap-around windows, radiant hot water heating, and a patio overlooking the ocean and park. Recent updates incl. brand new paint, flooring, baseboards, and stainless steel GE appliances. Amenities include an indoor pool, sauna, exercise room, and arguably the BEST shared rooftop patio in Vancouver. All of this just steps from the beach, seawall, tennis, golf, and shops/dining on Denman. 1 parking/1 storage included. Maint. Fee incl. heat/taxes.

KEY INFORMATION

MLS® R2349861

Residential Attached

West End

1 Bedroom

1 Bathroom

828 SF

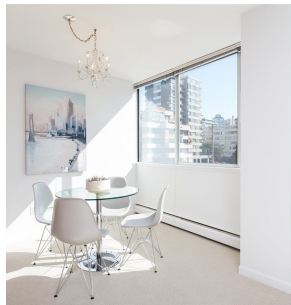
\$614.28 Maintenance Fees

FEATURES

Year Built: 1965

Views: STANLEY PARK & OCEAN

Listed By: rennie & associates realty ltd.



Mike Ross
778.987.8874
mross@rennie.com
rennie.com/mikeros

rennie